

ROCKY MOUNTAIN METROPOLITAN AIRPORT

Noise Report 2011

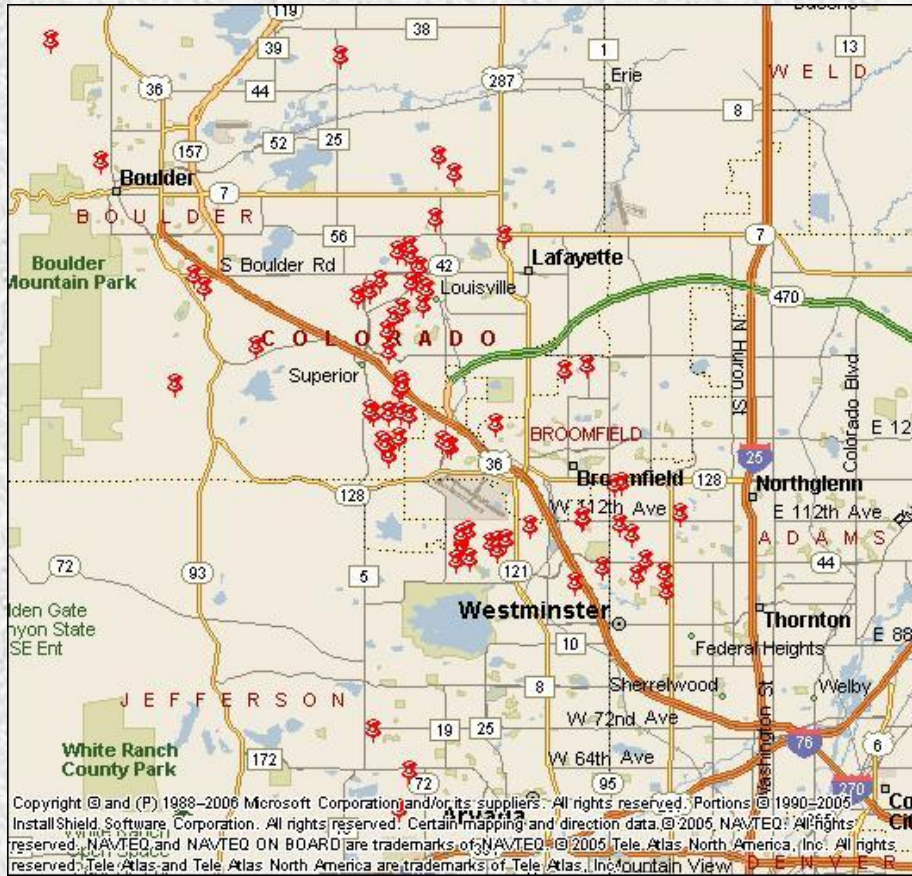
Introduction

With the intent to minimize the impact of aircraft noise on the surrounding communities, Rocky Mountain Metropolitan Airport developed this report focusing on information collected from the noise complaint hotline (303) 271-4874 and on our website at www.flyrmma.com. The statistical information contained in this report is made available to pilots, airport users, and surrounding communities via the Airport's website, and is updated quarterly.

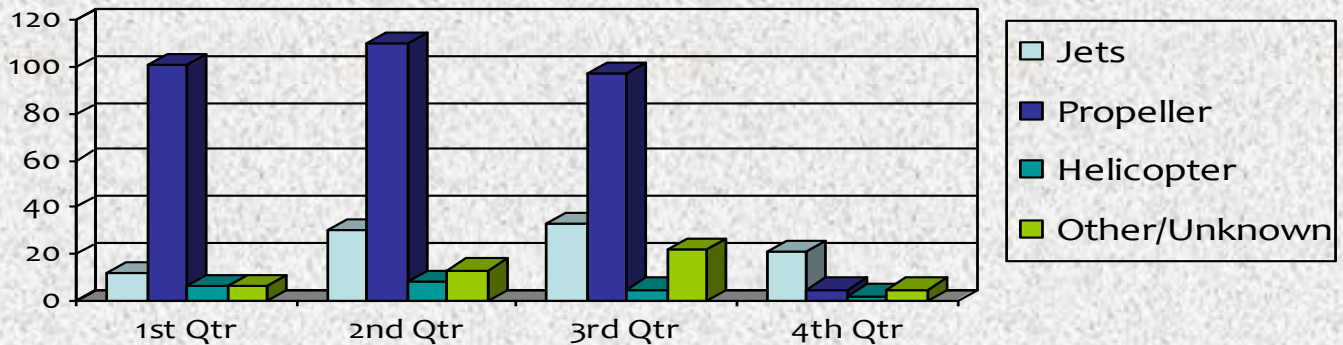
City	Quarterly Complaints					Household Complaints				
	1 st	2 nd	3 rd	4 th	Total YTD	1 st	2 nd	3 rd	4 th	Total YTD
Arvada			6	1	7			3	1	4
Boulder	8	12	9	3	32	2	5	3	2	8
Broomfield	3	6	6	1	16	2	5	3	1	8
Louisville	7	22	37	19	85	2	6	8	4	17
Lafayette	2		1	2	5	1		1	1	3
Northglenn										
Thornton										
Superior	100	108	90	5	303	5	10	10	2	20
Westminster	7	12	9	2	30	6	10	8	2	22
Other		1	2		3		1	2		2
Total	127	161	160	33	481	19	37	38	13	84

	Annual 2010	YTD 2011
Aircraft Operations	122,944	121,994
Noise Complaints	335	481

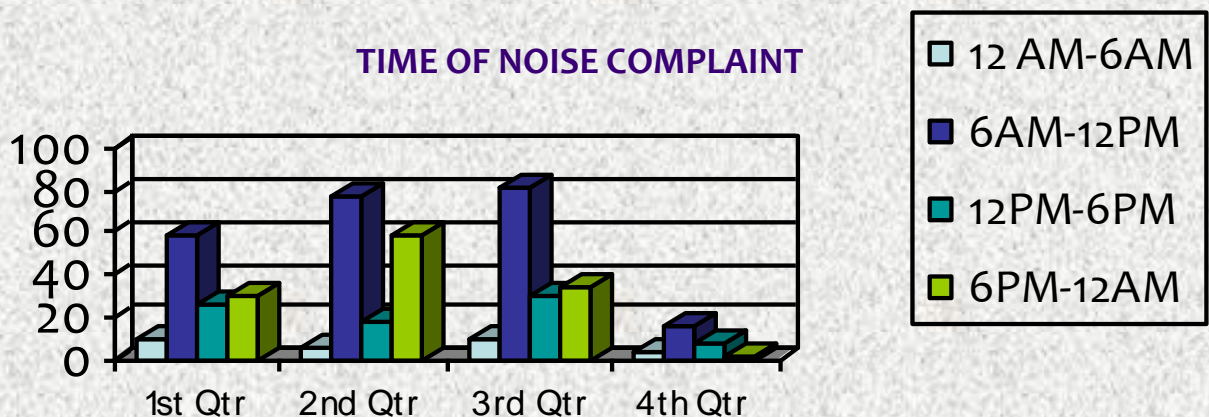
LOCATION OF 2011 NOISE COMPLAINTS IN RELATION TO AIRPORT



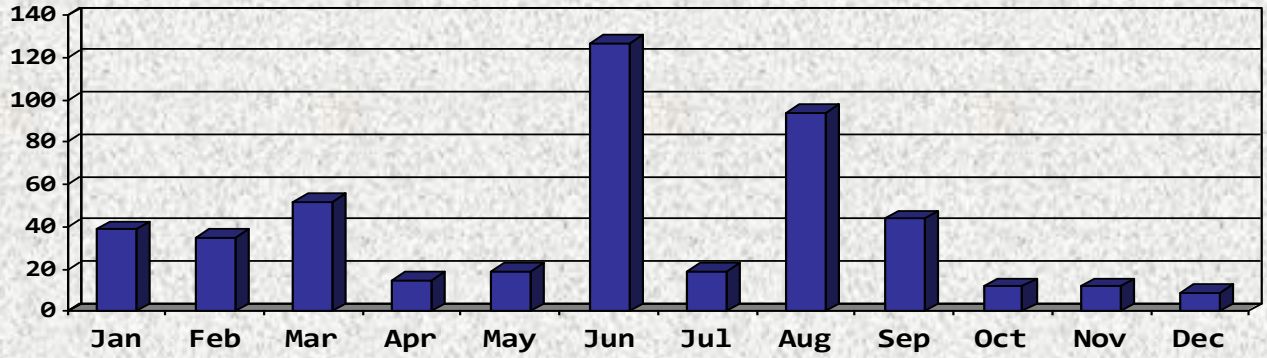
TYPE OF AIRCRAFT GENERATING COMPLAINTS



TIME OF NOISE COMPLAINT



NOISE COMPLAINTS BY MONTH



AIRCRAFT OPERATIONS BY MONTH

