

## Noise Report 2006

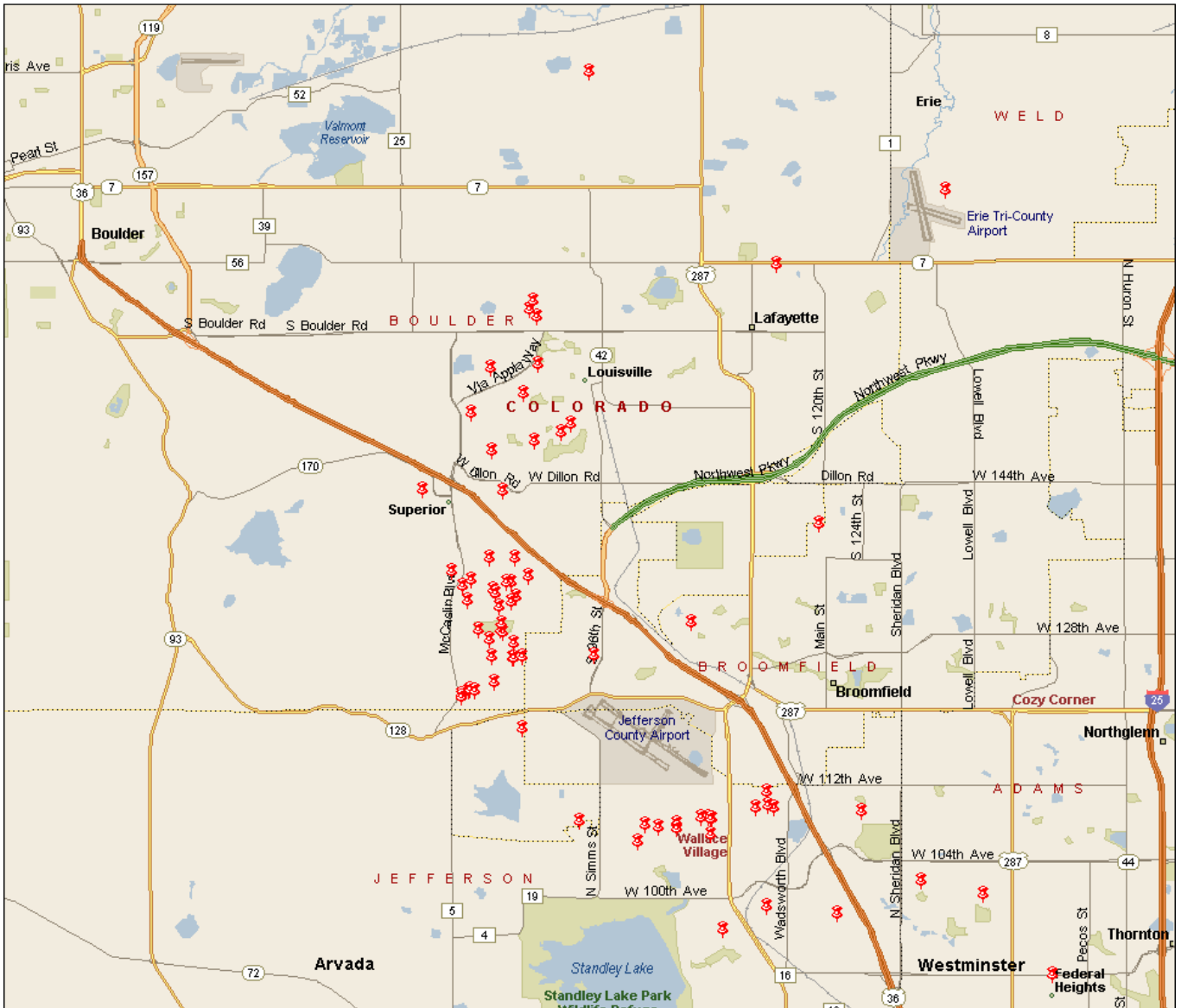
### Introduction

With the intent to minimize the impact of aircraft noise on the surrounding communities, Rocky Mountain Metropolitan Airport developed this report focusing on information collected from the noise complaint hotline (303) 271 - 4874. The statistical information contained in this report is made available to pilots, airport users, and surrounding communities via the Airport's web page (<http://jeffcoairport.co.jefferson.co.us>), and updated quarterly.

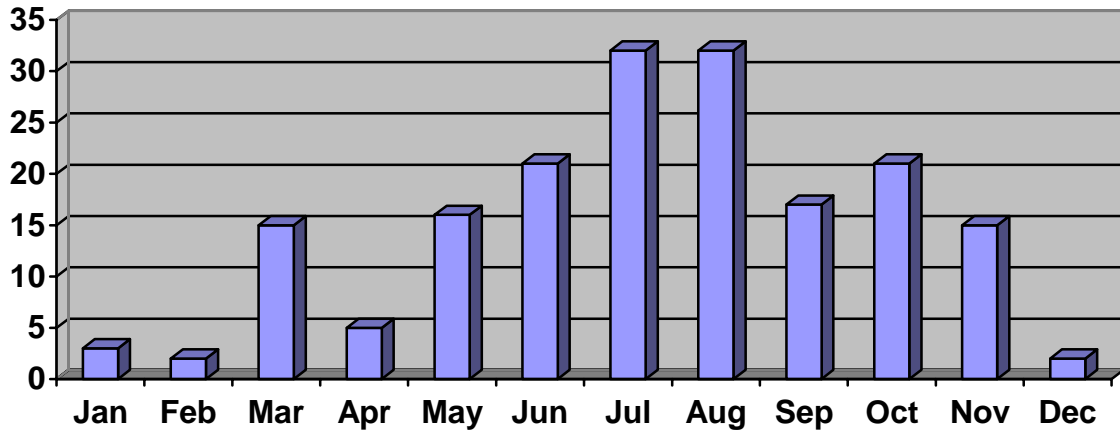
City	Quarterly Complaints					Household complaints					Highest number of complaints from a single household			
	1st	2nd	3rd	4th	Total	1st	2nd	3rd	4th	Total	1st	2nd	3rd	4th
Arvada			2	8				1	1				2	8
Boulder			19	1			1	6	1			1	10	1
Broomfield		1	14	2		4	4	7	2		2	10	5	1
Louisville	6	15	2	2			1	2	1			1	1	2
Lafayette		1	1	2				1	1				1	2
Northglenn														2
Thornton														
Superior		14	32	8			9	26	8			6	3	1
Westminster	14	10	8	15		4	4	2	12		9	6	6	2
Other		1	3				1	3				1	1	
<b>Total</b>	<b>20</b>	<b>42</b>	<b>81</b>	<b>38</b>		<b>8</b>	<b>20</b>	<b>48</b>	<b>26</b>					

	2005	2006
Aircraft operations	177,096	174,813
Noise complaints	133	181

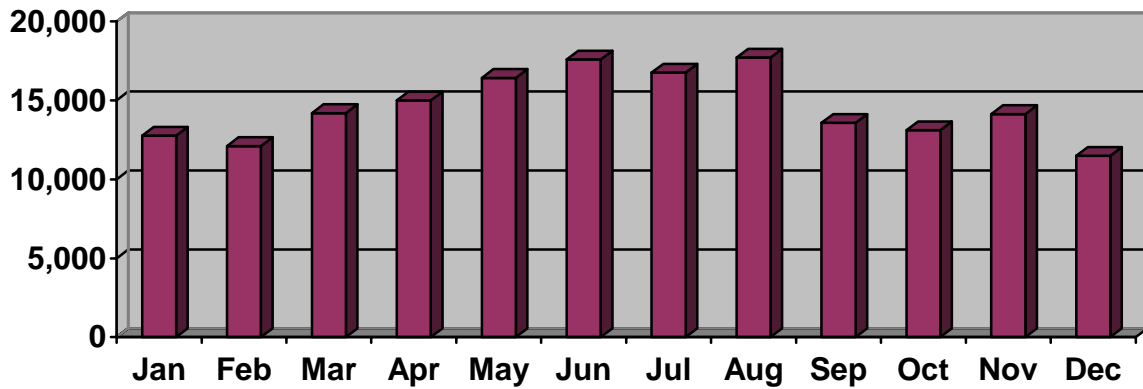
# LOCATION OF 2006's COMPLAINTS IN RELATION TO THE AIRPORT



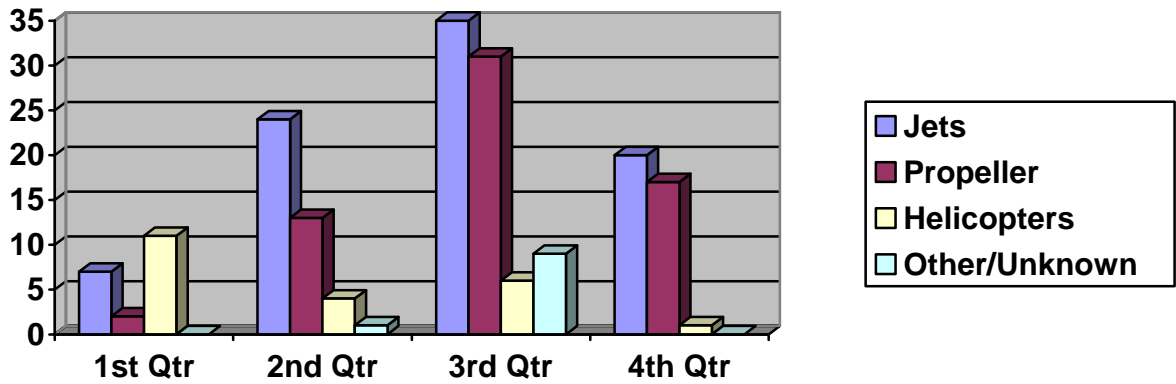
## NOISE COMPLAINTS BY MONTH



## AIRCRAFT OPERATIONS BY MONTH



## TYPE OF AIRCRAFT GENERATING COMPLAINTS



## BREAKDOWN BY TIME OF DAY NOISE COMPLAINTS ARE RECEIVED

