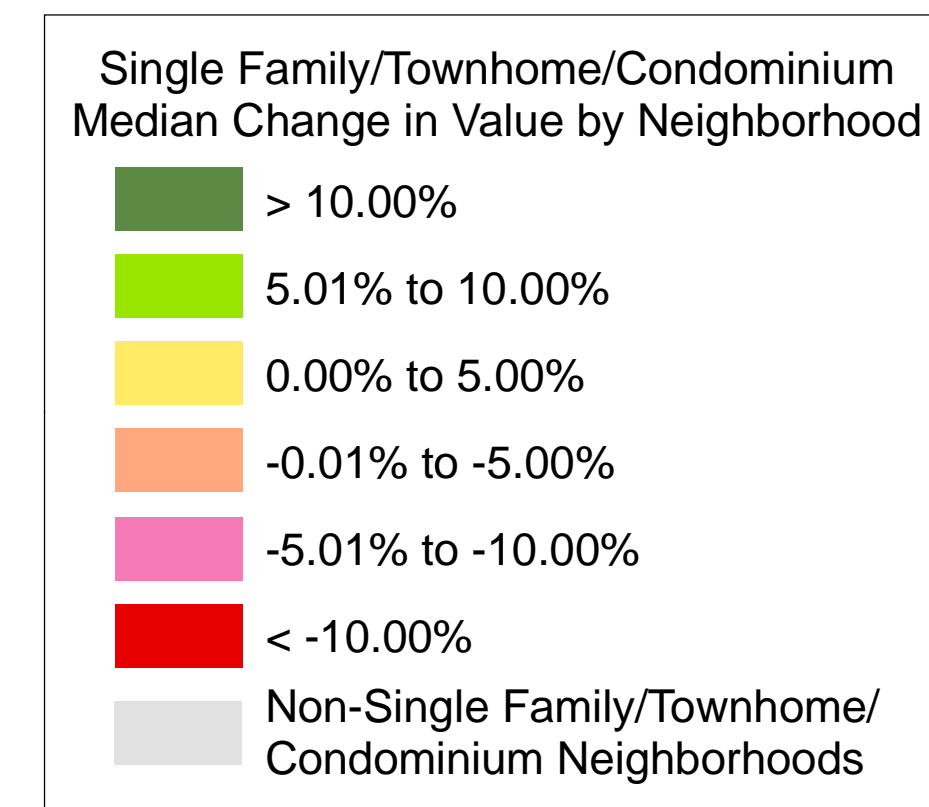
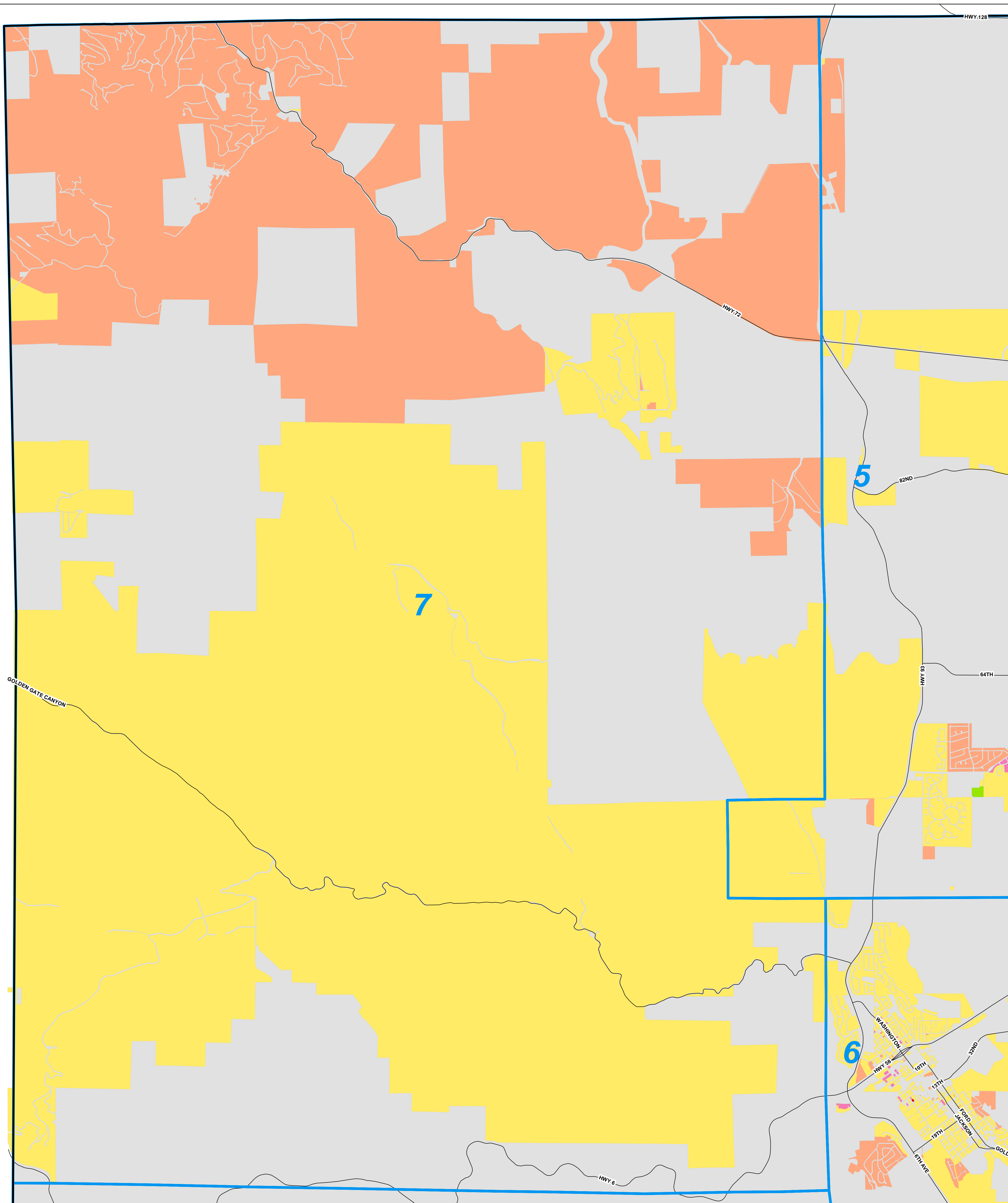
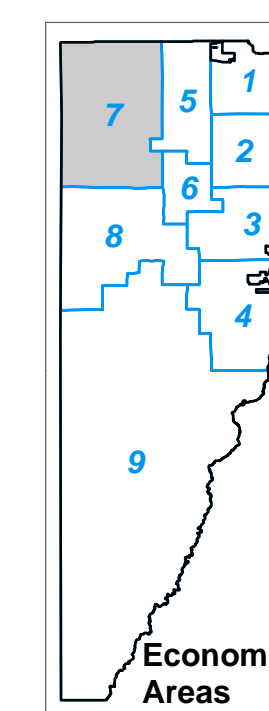
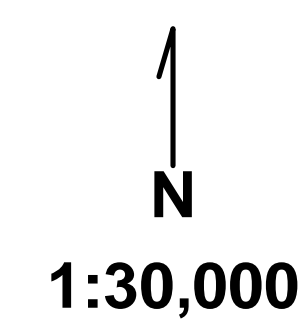


Jefferson County
 Single Family/Townhome/Condominium
 Median Change in Value by Neighborhood
 2007 Revaluation vs. 2009 Revaluation
 Economic Area 7



Jim Everson
Assessor



Map prepared by Jefferson County Assessor's Office from source material found in the County's GIS database.

This map has been prepared from the best available records. However, this product is sold "as is" and there is no express or implied warranty of any kind by Jefferson County for the completeness, accuracy, or correctness of this information, including but not limited to warranties of title or merchantability or fitness for a particular purpose. Jefferson County shall not be liable for damages of any kind arising out of use of this product or for any errors or inaccuracies.

THIS MAP IS FOR PLANNING PURPOSES ONLY.

2009ResiValChg_ea-pdfs.mxd - JC-Med_ValChg_Resi_EA7-2009.pdf - Produced 4/27/2009 - jnhansen