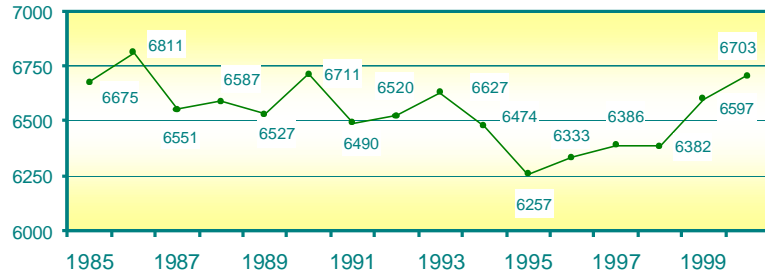


NUMBER OF BIRTHS

There were 71,453 births to Jefferson County mothers between 1990 and 2000. The annual number of births declined from a high of 6,811 in 1986 to a low of 6,257 in 1995 and has since increased (Figure 1). The rise in the number of births reflects the rising county population.

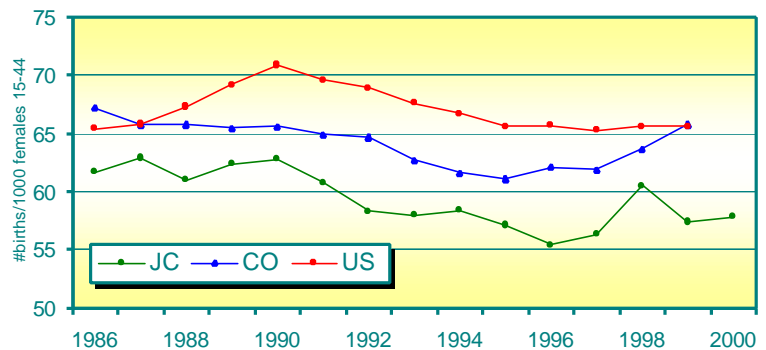
Figure 1. Annual number of births, Jefferson County, 1985-2000



FERTILITY RATES

The county's general fertility rate, (the number of births per 1,000 females aged 15-44), declined for several years and reached a low in 1996 of 55.2 (Figure 2). It has since begun to rise. Jefferson County's general fertility rate has tended to be lower than state and national rates.

Figure 2. General fertility rates, Jefferson County, Colorado & US, 1986-2000



PARENTAL DEMOGRAPHICS

Demographic information collected for each Colorado newborn includes the age, race, ethnicity and educational attainment of the infant's parents, and the marital status of the mother.

Nearly 100% of all birth certificates contain complete maternal demographic information.

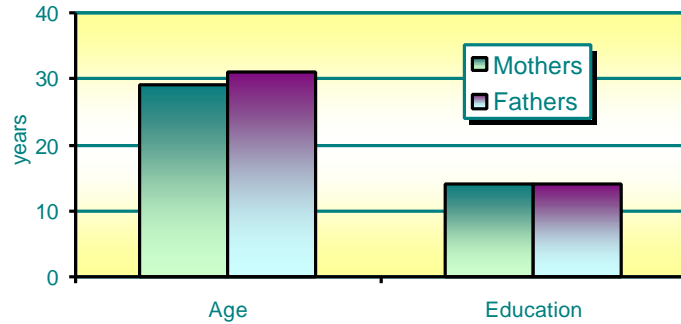
Paternal information is reported less consistently, although there has been improvement over the decade. In 1990, 87.5% of certificates contained paternal information, and by 1999 and 2000, the percentage had risen to 94.1%. Although reporting has improved dramatically, because paternal information was unreported on a substantial number of certificates (>4000 over the decade), a description of Jefferson County fathers is likely to be biased by the parents who chose not to report.

Demographics

The median age of Jefferson County mothers is slightly lower than that of fathers (Figure 3).

The median education of the two groups is identical, 14 years.

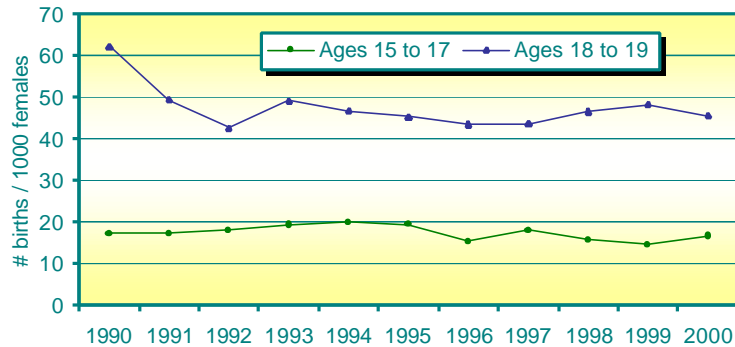
Figure 3. Median age and education of parents, Jefferson County 1990-2000



Births to Adolescent Females

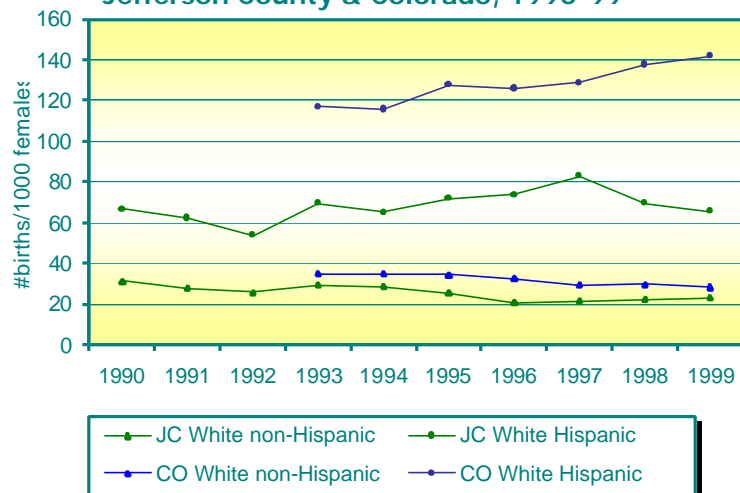
The number of births to adolescent mothers (19 years or younger) in the county ranged from a low of 436 in 1993 to a high of 533 in 2000. Adolescent birth rates have remained fairly steady throughout the period among females aged 15 to 17 (Figure 4). Rates among 18-19 year-old females were highest in 1990 and then declined.

Figure 4. Adolescent birth rates, Jefferson County, 1990-2000



The percentage of births to adolescent mothers reached a high in 2000, at 7.95% of all births. There was pronounced variation in the county in the percentage of births to adolescent mothers (Figure M1a and M1b). Areas of Arvada, Lakewood and Edgewater had the highest percentages of births to adolescent females.

Figure 5. Birth rates among Hispanic and non-Hispanic females ages 15-19, Jefferson County & Colorado, 1990-99



Comparing Jefferson County with Colorado, there were differences in adolescent birth rates by ethnicity and region (Figure 5):

Demographics

- Rates were similar among non-Hispanic females, with the state rate only slightly higher than the county's. Among non-Hispanic females, rates appeared to decline in both regions.
- Rates among Jefferson County Hispanic females were nearly twice those of non-Hispanic females.
- Rates among Hispanic females in the state were nearly twice those of Jefferson County.
- Between the two regions, trends in birth rates among Hispanic adolescents appeared to diverge during the latter half of the 1990s. Among Jefferson County adolescents rates began to decline after 1997, and state rates continued to increase.

Maternal Ethnicity

In the county the number and proportion of infants born to mothers of Hispanic origin rose 83%, from 518 in 1990 to 949 in 2000. In 2000 14.2% of all births were to Hispanic mothers.

Maternal Education

Among all mothers between 1990-2000, 89.75% had achieved at least a high school education. In 1990 88.8% of mothers had achieved a high school education. The percentage rose to 90.9% by 1996, and declined to 88.3% by 2000.

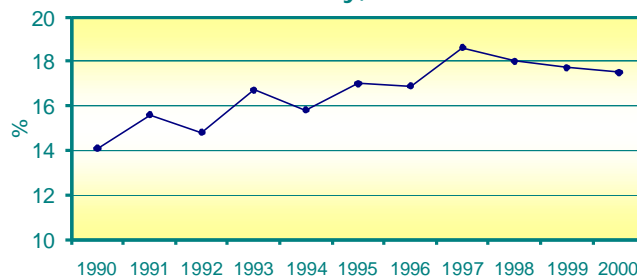
There is variation within the county in maternal educational attainment (Figures M2a and M2b). Edgewater and portions of Arvada, Lakewood, Pleasant View, and Fairmount have the lowest percentages of mothers who have attained at least a high school education.

Marital Status

During the 1990s the percent of infants born to unmarried mothers rose from 14.1% in 1990 to over 18% in 1997 and 1998 (Figure 6). In 2000 the proportion declined to 17.5%. In comparison, in 1998 the percent of unmarried mothers in Colorado was 25.5% and in the U.S., 32.8%.

The percentage of infants born to unmarried mothers varied significantly by location (Figures M3a and M3b). The highest percentages of unmarried mothers occurred in areas of Arvada, Edgewater, Golden/Pleasant View and Lakewood.

Figure 6. Percent unmarried mothers, Jefferson County, 1990-2000



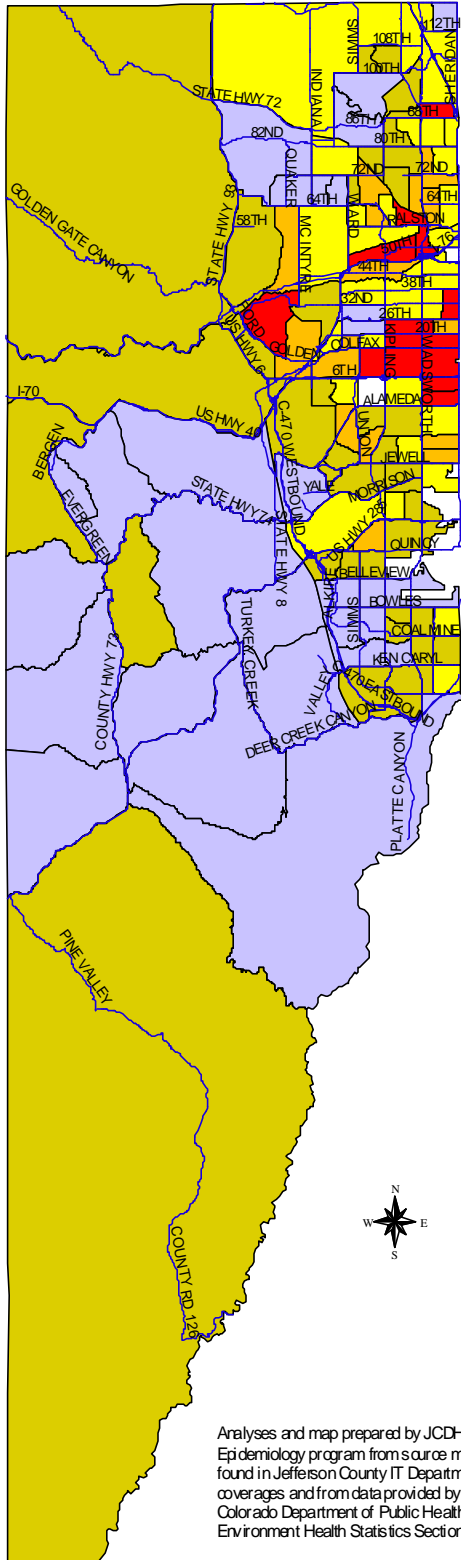
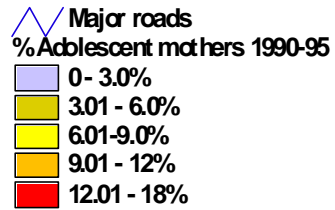


Figure M1a. Percent infants born to adolescent mothers (ages 15-19)

**Jefferson County
1990-95**



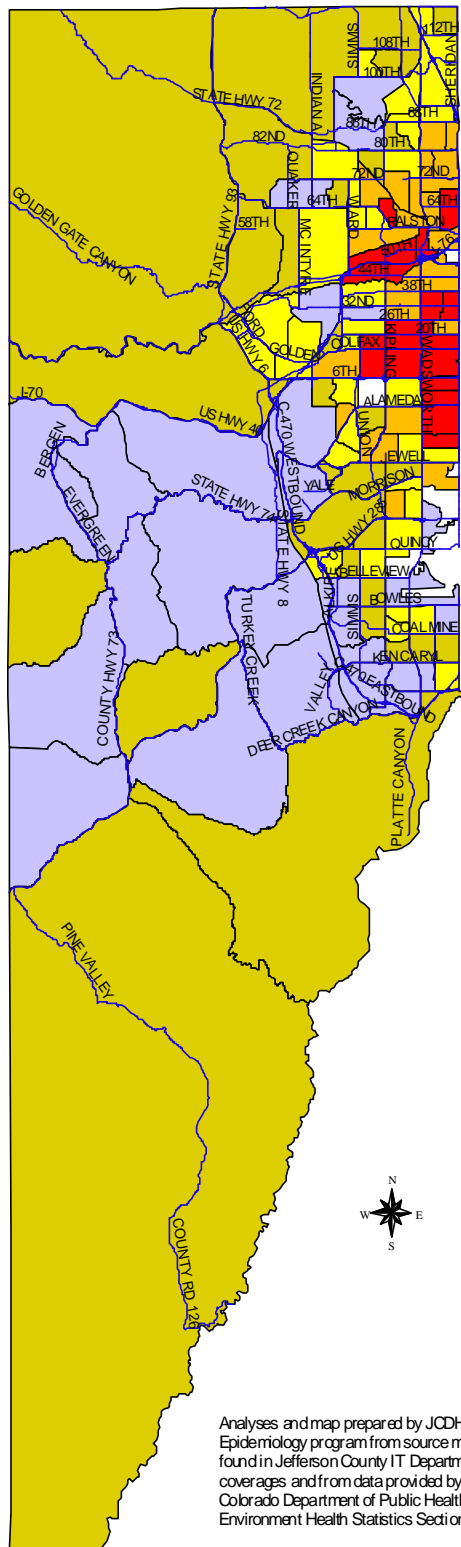
Community Health Services Division
and Epidemiology Program

Jefferson County Department of
Health & Environment
1801 19th Street
Golden, Colorado 80401

<http://co.jefferson.co.us>

September 2001

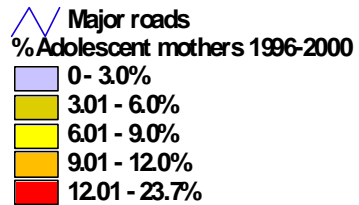
Analyses and map prepared by JCDHE
Epidemiology program from source material
found in Jefferson County IT Department
coverages and from data provided by the
Colorado Department of Public Health and
Environment Health Statistics Section



Analyses and map prepared by JCDHE Epidemiology program from source material found in Jefferson County IT Department coverages and from data provided by the Colorado Department of Public Health and Environment Health Statistics Section

Figure M1b. Percent infants born to adolescent mothers (ages 15-19)

Jefferson County
1996-2000



Community Health Services Division
and Epidemiology Program

Jefferson County Department of
Health & Environment
1801 19th Street
Golden, Colorado 80401

<http://co.jefferson.co.us>

September 2001

Demographics

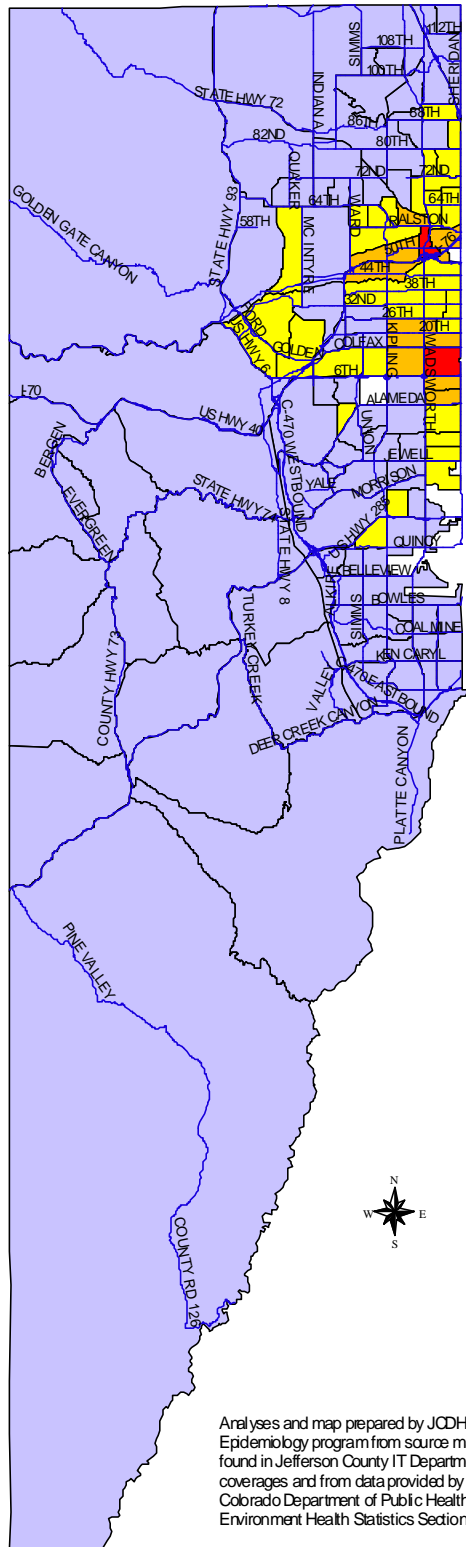


Figure M2a. Percent infants born to mothers with 12 or more years of education

Jefferson County
1990-95

Major roads
%Mothers with HS Education 1990-95

- 60 - 69.9%
- 70 - 79.9%
- 80 - 89.9%
- 90 - 100%

Community Health Services Division
and Epidemiology Program

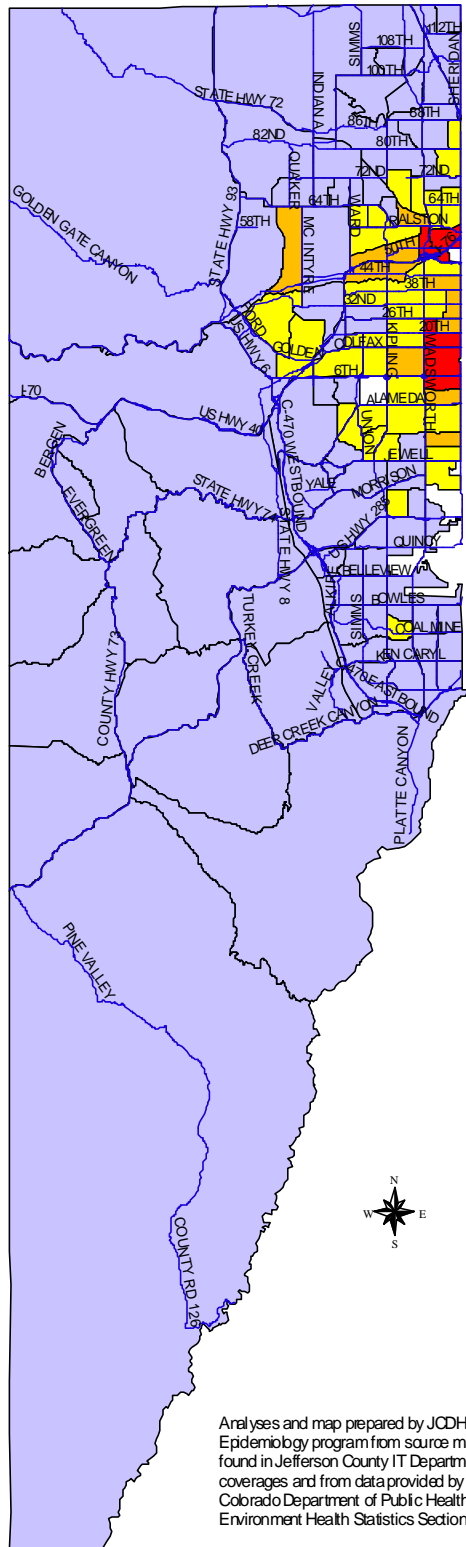
Jefferson County Department of
Health & Environment
1801 19th Street
Golden, Colorado 80401

<http://co.jefferson.co.us>

September 2001

Analyses and map prepared by JCDHE
Epidemiology program from source material
found in Jefferson County IT Department
coverages and from data provided by the
Colorado Department of Public Health and
Environment Health Statistics Section

Demographics



Analyses and map prepared by JCDHE Epidemiology program from source material found in Jefferson County IT Department coverages and from data provided by the Colorado Department of Public Health and Environment Health Statistics Section

Figure M2b. Percent infants born to mothers with 12 or more years of education

**Jefferson County
1996-2000**

- Major roads
- %Mothers with HS Education 1996-2000
- 60 - 69.9%
- 70 - 79.9%
- 80 - 89.9%
- 90 - 100%

Community Health Services Division
and Epidemiology Program

Jefferson County Department of
Health & Environment
1801 19th Street
Golden, Colorado 80401

<http://co.jefferson.co.us>

September 2001

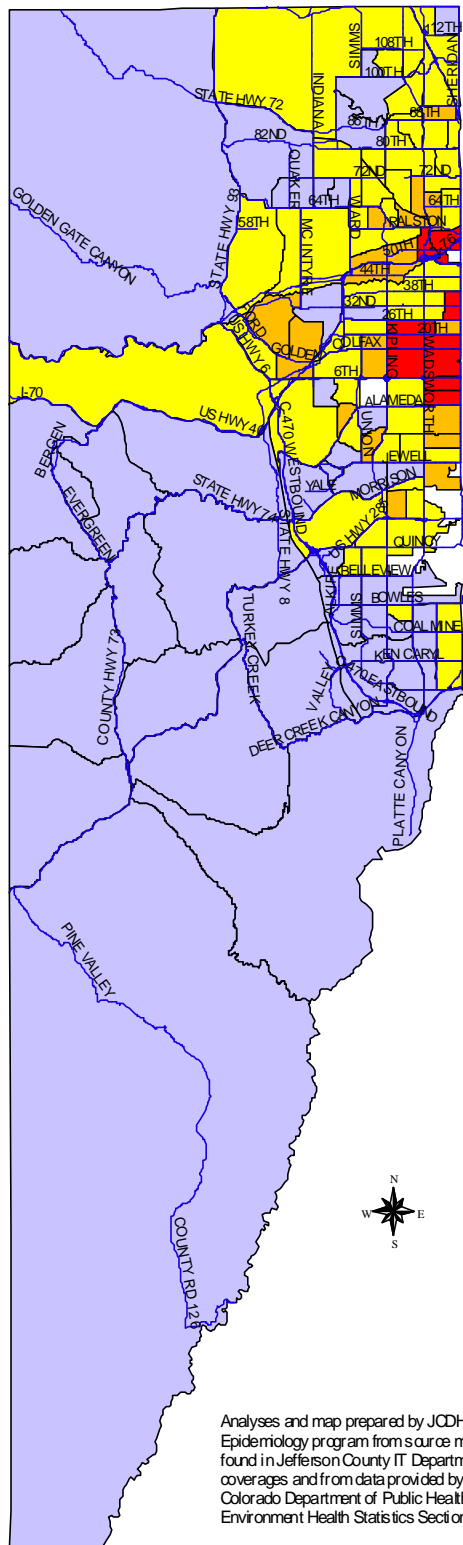


Figure M3a. Percent married mothers
Jefferson County
1990-95

Major roads
% Married mothers 1990-95

- 60 - 69.9%
- 70 - 79.9%
- 80 - 89.9%
- 90 - 100%

Community Health Services Division
and Epidemiology Program

Jefferson County Department of
Health & Environment
1801 19th Street
Golden, Colorado 80401

<http://co.jefferson.co.us>

September 2001

Analyses and map prepared by JCDHE
Epidemiology program from source material
found in Jefferson County IT Department
coverages and from data provided by the
Colorado Department of Public Health and
Environment Health Statistics Section

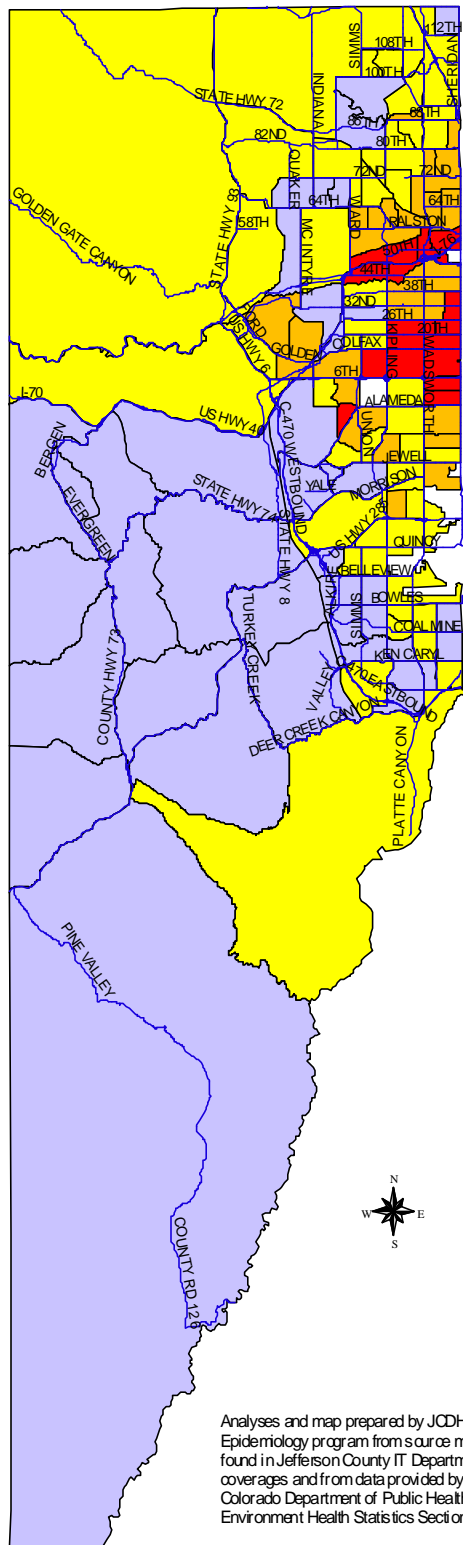
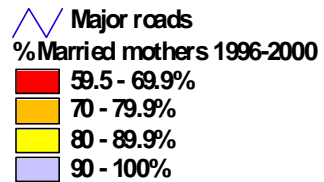


Figure M3b. Percent married mothers

Jefferson County
1996-2000



Community Health Services Division
and Epidemiology Program

Jefferson County Department of
Health & Environment
1801 19th Street
Golden, Colorado 80401

<http://co.jefferson.co.us>

September 2001