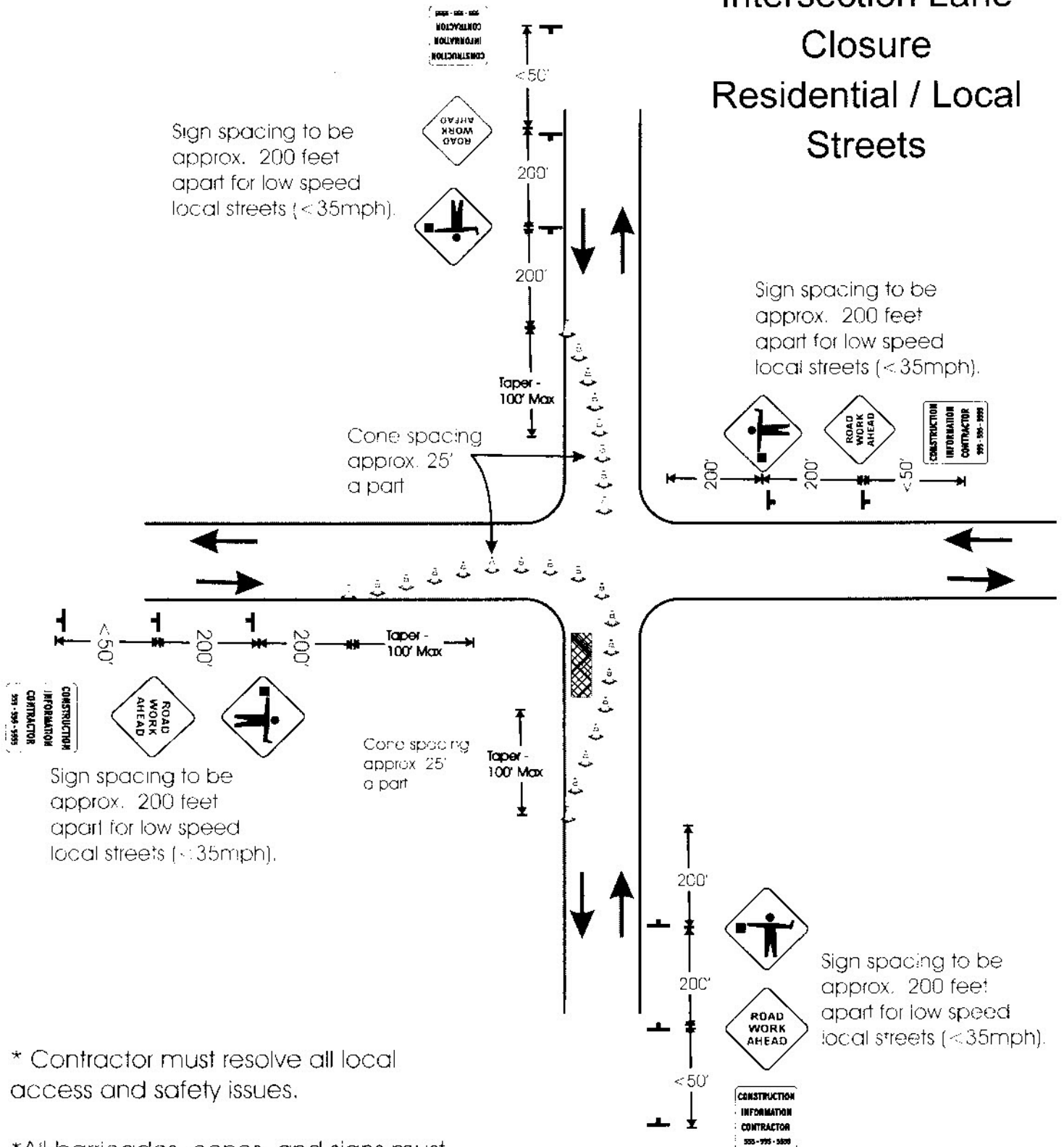


Intersection Lane Closure Residential / Local Streets



* Contractor must resolve all local access and safety issues.

*All barricades, cones, and signs must be in accordance with the Manual on Uniform Traffic Code Devices (MUTCD).

*Flaggers must follow MUTCD Guidelines. Flaggers must use and wear safety equipment as required.

DRAWING NOT TO SCALE