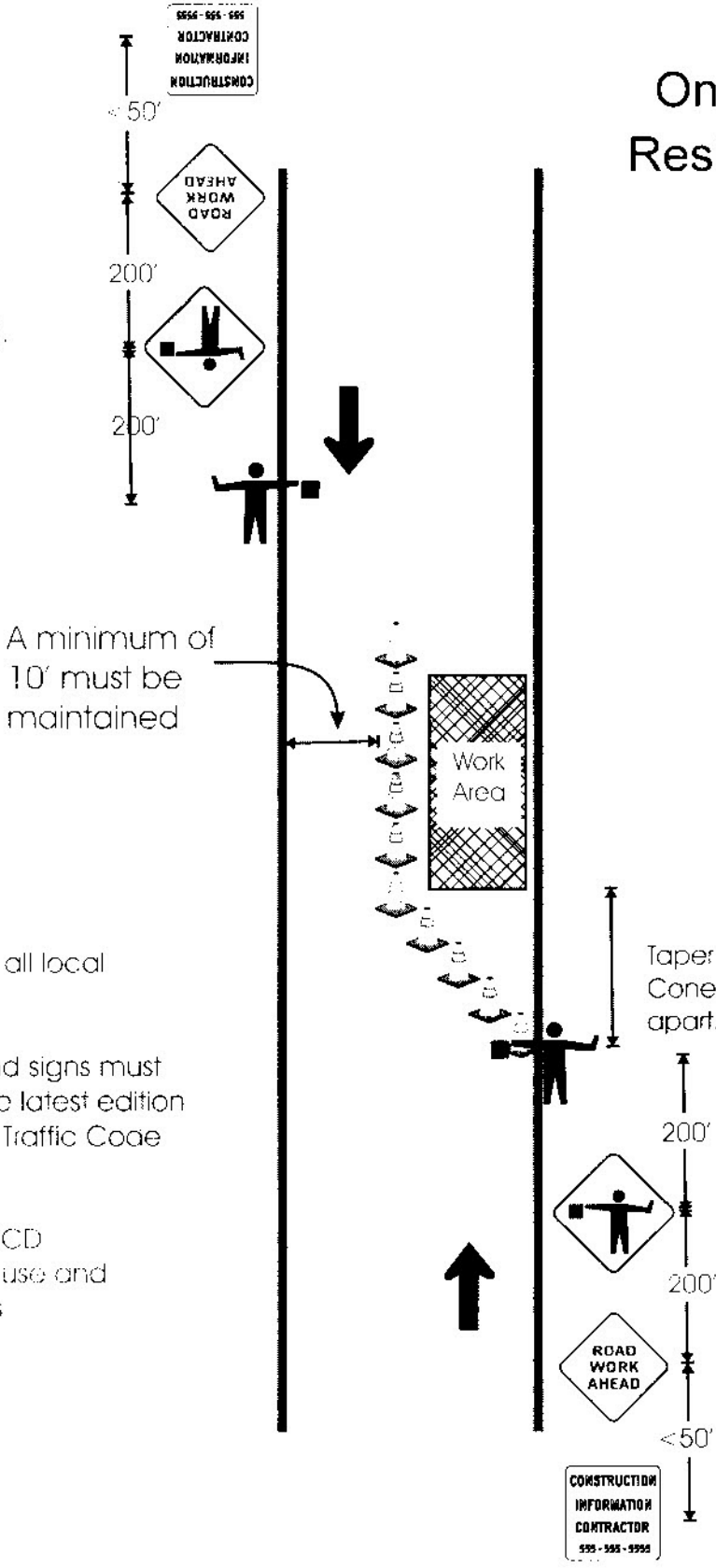


# One Lane Road Residential / Local Street

Sign spacing to be approx. 200 feet apart for low speed local streets (< 35mph).



A minimum of 10' must be maintained

Taper - 100' Max  
Cone spacing approx 25' apart.

Sign spacing to be approx. 200 feet apart for low-speed local streets (< 35mph).

\* Contractor must resolve all local access and safety issues.

\*All barricades, cones, and signs must be in accordance with the latest edition of the Manual on Uniform Traffic Code Devices (MUTCD).

\*Flaggers must follow MUTCD guidelines. Flaggers must use and wear safety equipment as required.

Drawing Not to Scale