



*Board of County
Commissioners*

April 22, 2011

Faye Griffin
District No. 1

John Odom
District No. 2

Donald Rosier
District No. 3

Greetings Flying J Ranch Park Neighbors,

Jefferson County Open Space would like you to know of some forest management work that will be underway at Flying J Ranch Park this summer. The area where activities will be concentrated is at the southern end of the Park, adjacent to the Apache Springs and Shadow Mountain subdivisions (see map on back).

Our intent is to develop and implement a shaded fuel break over the 20-acre, closed-canopy and mixed-conifer stand along the southern and eastern boundaries. The fuel break is being created to minimize the effects of a wildfire and conforms to the guidelines for *Forested Subdivisions and Communities* prepared by the Colorado State Forest Service. These activities will also serve as a demonstration project of proper forest management and establishment of defensible space for the surrounding community.

A 40-foot wide strip will be created to protect the power line running along the eastern boundary. The project will also focus on removing two patches of very dense lodgepole pine heavily infected with dwarf mistletoe, a small, leafless, parasitic plant that causes major damage to the lodgepole and ponderosa pine forests along the Front Range.

Property owners within the area are encouraged to implement defensible space on their own property. For more information on creating a defensible space on your property please contact the County's Fire Mitigation Officer Rocco Snart at rsnart@jeffco.us, 303-271-4902 or Allen Gallamore, CSFS District Forester at csfsgo@lamar.colostate.edu, 303 279-9757.

We are committed to long term management on our properties. Once the cutting and clearing has been completed, staff will conduct annual monitoring of regeneration, dwarf mistletoe infestation and proper tree spacing within the fuel break.

For further information on dwarf mistletoe see:

http://www.fs.fed.us/r1-r4/spf/fhp/mgt_guide/dwarf_mistletoe/dwarfmistletoe.pdf

The Fuel Break Guidelines can be found at:

http://csfs.colostate.edu/pdfs/fuelbreak_guidelines.pdf

To receive updates by email on activities at Flying J Ranch Park or to submit additional questions or comments, contact Thea Rock, Manager of Public Information, at trock@jeffco.us or call 303-271-5902.

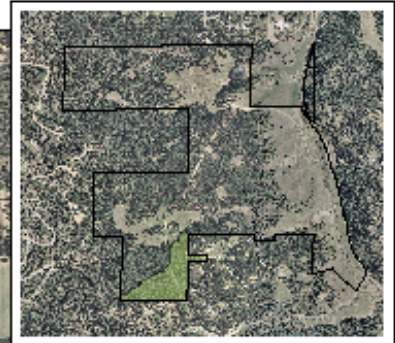
Sincerely,

Tom Hoby, CPRP
Director of Open Space

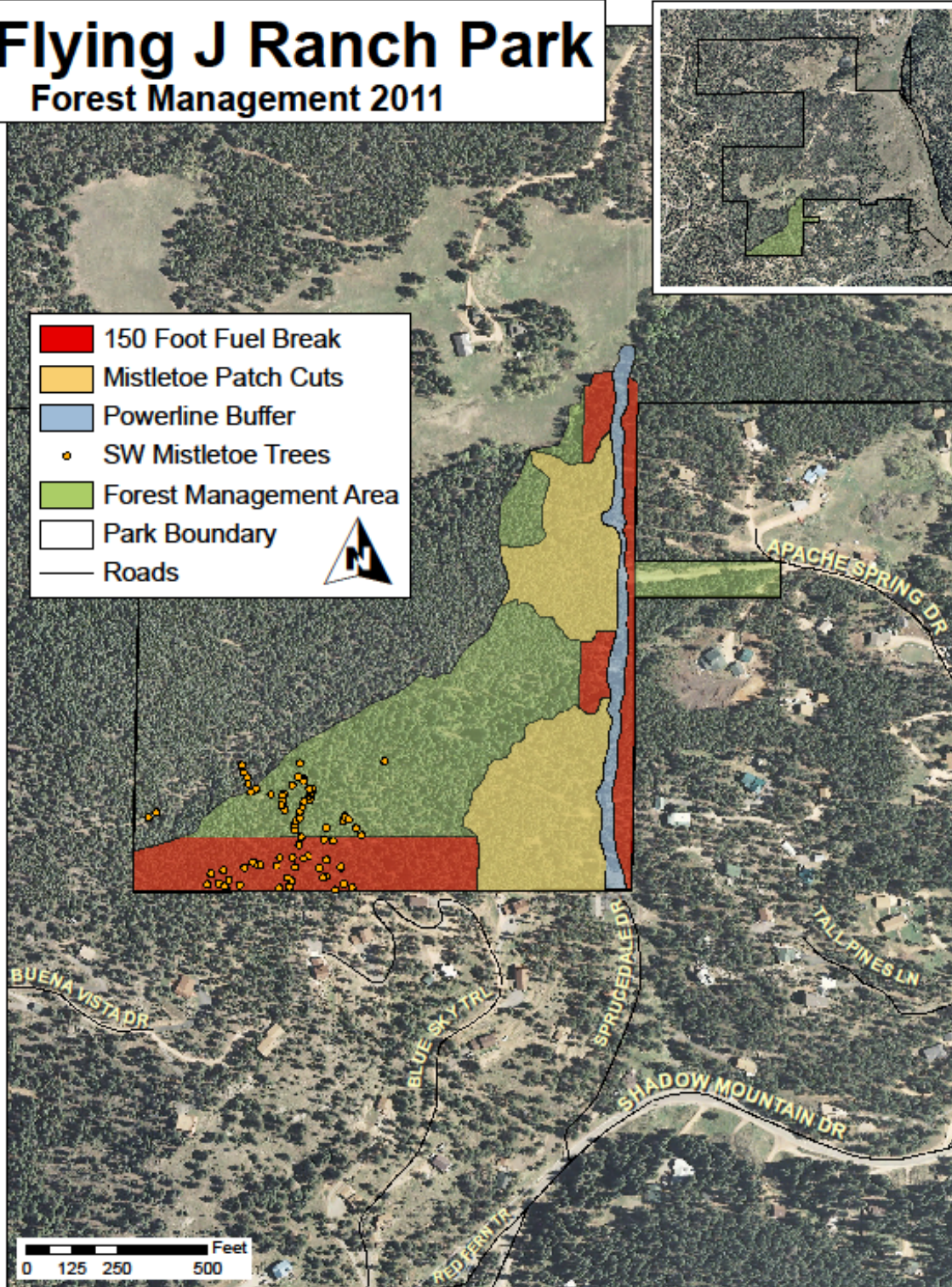


Flying J Ranch Park

Forest Management 2011



- 150 Foot Fuel Break
- Mistletoe Patch Cuts
- Powerline Buffer
- SW Mistletoe Trees
- Forest Management Area
- Park Boundary
- Roads



0 125 250 500 Feet