

Open Space Division • Management Report

Oct. - Dec.
2009

JEFFERSON COUNTY

Acquisition: Acquire lands to preserve resources and provide for future recreational opportunities

- The Grove, adjacent to Hiwan Homestead Museum and owned by the Jefferson County Historical Society, was donated to Jeffco Open Space Foundation, Inc., and then transferred to Jefferson County Open Space. This approximately 2.6-acre property will provide a buffer between the Museum and nearby residential development.
- The County acquired, by donation, 80 acres adjacent to the southern boundary of Elk Meadow Park. The Mountain Area Land Trust holds a Conservation Easement on the property to protect it from being subdivided, yet it allows for public hiking and riding trails. No formal trails currently exist. The property was donated to the Jeffco Open Space Foundation, Inc. and then deeded to Jefferson County Open Space.
- The County acquired approximately 19 acres north of Alameda Parkway and west of C-470 as part of the Front Range Mountain Backdrop/Foreground Preservation Area and as an addition to Matthews/Winters Park.
- A License Agreement to allow access from Easley Road to private property west of the Boulder Diversion Canal was granted for agricultural purposes only.
- Jefferson County completed an Easement from Coors Brewing Company, over property leased to the Rolling Hills Country Club, to allow administrative access to Open Space property on South Table Mountain Park.



80-acre donation south of Elk Meadow Dog Off Leash Park.



Lookout Mountain Nature Center's storage shed construction.

Land Management: Manage Open Space lands to preserve and enhance natural and cultural resources

- In 2009, Open Space issued 292 Special Activity Agreement Permits that covered 469 different events. Since placing this form on the Open Space Web site, park users have found it a quick and easy way to apply for the Permit.
- Open Space Natural Resources staff were able to complete a prescribed burn at White Ranch Park in mid-October and multiple slash pile burns of forest management debris at Mount Falcon Park, following area snowfalls.
- Construction of a Lookout Mountain Nature Center storage shed was completed. It will complement the Nature Center building and provide storage of display items and educational materials.

Continued on page 2

Oct. - Dec.
2009

JEFFERSON COUNTY

Land Management: Manage Open Space lands to preserve and enhance natural and cultural resources (continued)

- Following Open Space Advisory Committee input and feedback from the Trail Use Task Force, staff will better define equestrian parking opportunities at selected parks. A new sign will indicate reserved equestrian parking until noon and then allow first-come, first-served parking at all other times. This new signage will be evaluated to verify its effectiveness in parking lots at Alderfer/Three Sisters West, Lair o' the Bear, Mount Falcon East and West and Matthews/Winters Parks.



Recreation: Provide for quality visitor experiences in a manner that protects natural and cultural resources

- A 60-car parking facility and trailhead has been completed at Mayhem Gulch, approximately 12 miles west of Golden on U.S. Highway 6. Open Space staff will complete the construction of the restroom facility in the spring of 2010.



Mayhem Gulch parking lot.

- Construction has been completed at Hildebrand Ranch Park for a 50-car parking lot of permeable interlocking concrete pavers as well as a separate equestrian lot.
- Construction has started for a parking lot, trailhead, entry road and highway-widening project at North Table Mountain Park. Access will be from Highway 93 and includes a 40-car parking lot and a separate equestrian lot. The restroom and other trailhead improvements should be completed by the end of 2010.

Education: Foster awareness and appreciation for natural and cultural resources and the ethic of resource stewardship

Lookout Mountain Nature Center

In the fourth quarter of the year, Lookout Mountain Nature Center reached 7,400 people through nature visits and group and public programs. The annual Halloween Trail was revamped and entitled "Halloween Tales and Trails" with about 500 people attending over the two evenings. "Nature Gifts" for kids up to 8 years old was successful with a total of 200 attending over three days. Overall for 2009, Lookout Mountain Nature Center served over 51,000 people with programs and visitor services. This represents the highest year on record since counts began in 1990.



Halloween Tales and Trails event.

Oct. - Dec.
2009

JEFFERSON COUNTY

Education: Foster awareness and appreciation for natural and cultural resources and the ethic of resource stewardship (continued)

Hiwan Homestead Museum

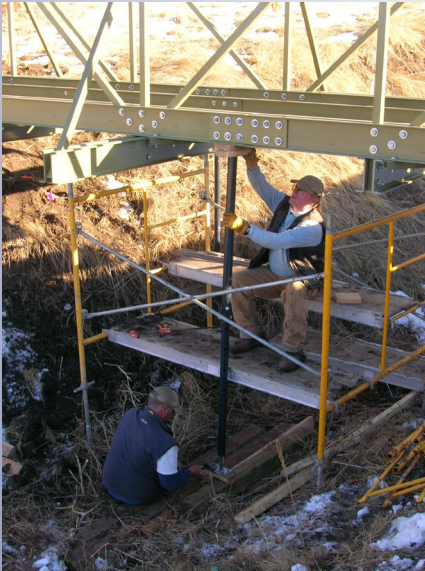
Hiwan's Halloween Celebration was well attended by area families. The Evergreen Holiday Walk participants enjoyed special music from the student choir, orchestra and a chamber group from the Rocky Mountain Academy. Museum staff and volunteers roasted chestnuts on an open fire and served hot cider to participants. The sold-out annual Christmas Tea featured speakers from the Denver Christkindlmarkt representing Christmas in Germany, Latvia and other European countries. The Museum served approximately 2,875 people through tours, education programs, special events and outreach programs during the fourth quarter. The total outreach for 2009 is estimated to be similar to last year at 16,500 people.

Partnerships: Strengthen and build partnerships for community parks, recreation, open space and trails

- Important to grant funding is the demonstration of partnerships and support from the community and like agencies. Jefferson County Open Space provided letters of support to the City of Wheat Ridge for a grant application to complete Phase III of the 38th and Kipling Park.

Open Space also provided a letter of support to Clear Creek County Open Space to obtain GOCO Grant funding for the Oxbow acquisition. The parcel would provide trail connectivity between Clear Creek and Jefferson Counties along the Clear Creek corridor.

- A kiosk was installed at the Pleasant View Community Park at Camp George West indicating access to South Table Mountain Park for Open Space visitors.



Open Space staff work on the North Table Mountain Park bridge.

Sustainability: Ensure the viability of Jefferson County Open Space for future generations

- Two fiberglass bridges were installed to cross deep drainages at North Table Mountain Park. This material is being tried for the first time by Open Space and has great potential due to the light weight, ease of installation, reasonable cost and appealing aesthetic.
- Ongoing maintenance items include repainting signs, winterizing drinking fountains, cleaning gutters, checking heater operation, repairing sewer lines for a Park restroom, replacing a storm-water pump, as well as other miscellaneous projects.
- Annual Awards recognized Outstanding Achievement by Open Space Staff: Safety: Mike Morin, Ranger; Individual Achievement to Sue Ashbaugh, Hiwan Homestead Museum; Team Achievement to Hildebrand Ranch Park Pavers; and Heck-of-a-Try to the North Area Park Maintenance Crew for ongoing graffiti removal.



Team Achievement: Hildebrand Ranch Park Pavers

Award Recipients: Jerry Bader, Martin Barwick, Tim Redmond, Frank Kunze, Kim Frederick, B.J. Ellison (not pictured) and standing to the right, County Administrator Ralph Schell.