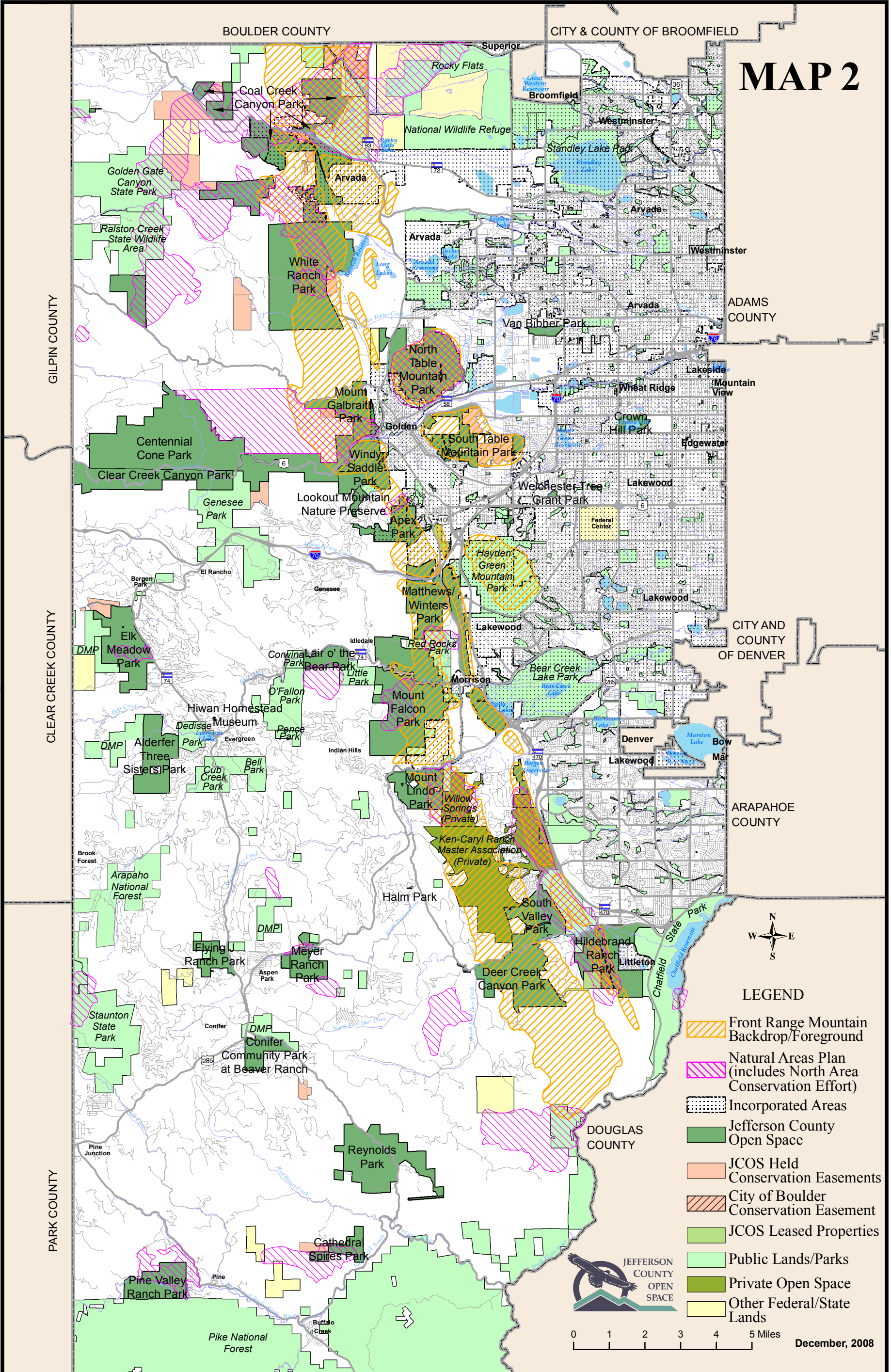


CONCEPTUAL LARGE SCALE POTENTIAL PRESERVATION AREAS

MAP 2



LEGEND

- Front Range Mountain Backdrop/Foreground
- Natural Areas Plan (includes North Area Conservation Effort)
- Incorporated Areas
- Jefferson County Open Space
- JCOS Held Conservation Easements
- City of Boulder Conservation Easement
- JCOS Leased Properties
- Public Lands/Parks
- Private Open Space
- Other Federal/State Lands

0 1 2 3 4 5 Miles December, 2008

Disclaimer: Open Space maps and text are intended to be for descriptive and Open Space planning purposes only and are not intended to have an effect on zoning and/or assessed values. Open Space will only acquire property from willing sellers. Maps do not imply an individual property owner's willingness to sell their property nor do they imply that Open Space is the only appropriate land use for any particular parcel. It is a guiding principle that eminent domain is not used to acquire private property rights. Irrespective of the Potential Preservation Areas shown on the map(s), other lands with Master Plan values may be considered for potential Open Space preservation. Any property owner may notify Open Space in writing, at any time, as to whether they are or are not currently a willing seller. Open Space maintains a list of landowners formally withdrawing their property from consideration for Open Space preservation.