

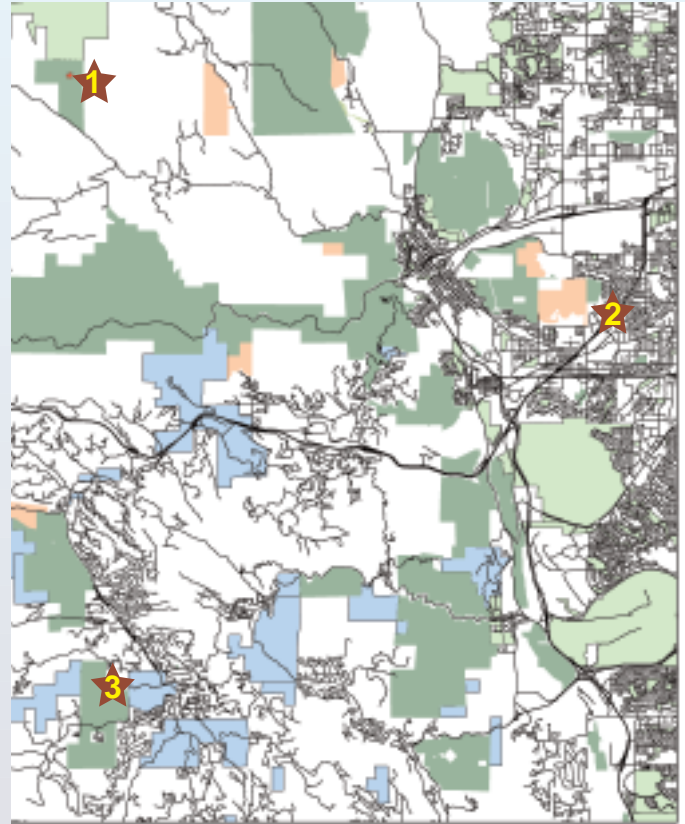
# Open Space Division · Management Report

April - June  
2008

JEFFERSON COUNTY

## Priority Land Acquisition

- 1 Open Space acquired 107 acres north of Golden Gate Canyon Road in the Mount Tom area. The former Thompson property is contiguous to another acquisition of approximately 464 acres previously held by Termentozzi. Both parcels provide over 500 acres of Open Space contiguous to Golden Gate Canyon State Park.
- 2 R-1 Jefferson County School District completed Easement Agreements with the County as part of the construction of the John and Karen Litz Preschool.
- 3 The Jeffco Open Space Foundation, Inc. acquired by donation from the Stobie family approximately two acres adjacent to the eastern boundary of Alderfer/Three Sisters Park. The property will provide a buffer as well as potential access to the Park.



*Recent acquisitions for Jefferson County Open Space.*



*Open Space staff accepts an award from George Selby, NAGC President.*

## Leadership

- Hiwan Homestead Museum staffers Meghan McGinnes and John Steinle assisted at the American Association of Museums (AAM) conference in Denver including receptions at the Denver Firefighters Museum and the Buffalo Bill Museum. They also attended the Colorado-Wyoming Association of Museums' meeting in Sheridan, Wyoming where Meghan presented one of the sessions and John presented a slate of Board candidates as the Nominating Chair.
- Jefferson County Open Space was recognized by the National Association of Government Communicators with the Blue Pencil Award of Excellence for Special Publications: Neighborhood Updates. Thea Rock, Manager of Citizen Outreach, and Bridgit Silver, Graphic Specialist, accepted the award in Albuquerque, New Mexico.

## Quality Visitor Experiences

- On June 3rd, the Trail Use Task Force held their spring meeting. The Trail Use Task Force members meet twice a year to give updates regarding community feedback on park use and conflicts. The fall meeting has been scheduled for October 21st. The group's mission is to identify trail use conflicts and make recommendations for their solution to the Open Space Advisory Committee and staff.
- A new four-color Hiwan Homestead Museum brochure was developed, printed and distributed utilizing grant funding. These attractive brochures were designed by Bridgit Silver and will enhance marketing efforts for the museum.

*Continued on page 2*

April - June  
2008

JEFFERSON COUNTY

## Environmental & Cultural Education

- Hiwan Homestead Museum opened in May a new hands-on exhibit, titled "Bear Creek Mercantile." A recreation of an 1895 country general store, the exhibit was assembled with the help of the museum volunteers.
- Hiwan hosted a presentation by photographer John Fielder at the local Center Stage Theater featuring slides from his book of then-and-now photos of Colorado. Fielder's recent Colorado scenes were originally shot by William Henry Jackson more than a century ago.



*Young visitors enjoying their day at the Lookout Mountain Nature Center and Preserve.*

- Staff from the Lookout Mountain Nature Center conducted Migration Celebration vignettes at South Valley, Matthews/Winters and Crown Hill Parks in March and April. The annual Wildflower Festival involved staff and volunteers in providing information to the public on native plants. In the second quarter of the year, LMNC reached 16,643 through nature visits and group and public programs which is up about 8% from last year.

## Natural Resource Management & Conservation

- Crews from Natural Resources and the Colorado State Forest Service conducted prescribed burning at White Ranch Park. Treating 29 acres of ponderosa pine/savanna and 36 acres of hay meadows, the effort reduced fuels and restored nutrients to the soil.
- Forest Management has been implemented at Mount Falcon Park to reduce fuels through thinning and skidding of timber. The timber will be removed from the Park through fuel wood sales to the public.

## Funding Partnerships

- A historic structures assessment was recently completed. This \$98,500 project was awarded a 50% matching grant in 2005 by the Colorado Historical Society. Multiple buildings and an archaeological site were assessed at five Parks: White Ranch, Hildebrand Ranch, Centennial Cone, Alderfer/Three Sisters and Lookout Mountain Nature Preserve. The historic assessment information allows for greater understanding of preservation, restoration options and removal.



*Youth Work Program participants moved tons of crusher fine material and drank lots of water!*

## Trail Development, Maintenance & Improvement

- Trail staff and the Youth Work Program laborers worked diligently on the trails at South Table Mountain. Over 1,500 tons of crusher fine material was spread on the tread, creating over 7,000 feet of trail on the eastern area of the mesa top.

*Continued on page 3*

April - June  
2008

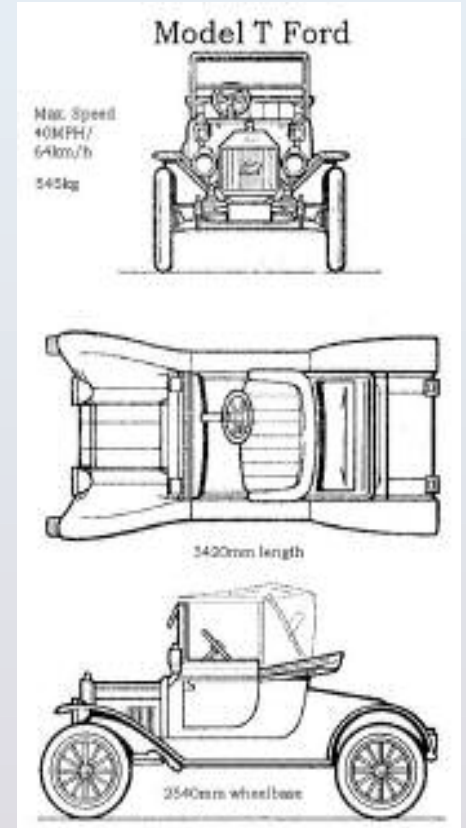
JEFFERSON COUNTY

## Trail Development, Maintenance & Improvement (*continued*)

- During June's National Trails Day, 15 staff members and 48 volunteers worked 360 hours to move 200 tons of crusher fines gravel to complete 1,100 feet of new trail. The effort at Matthews/Winters Park also completed 300 feet of new natural surface trail, installed three new trail signs and reclaimed a portion of the Village Walk Trail. Volunteers provided public information on the new trail configuration that provide separate access routes for different user groups.

## Counties in Partnership

- Hiwan Homestead Museum hosted the Model T Centennial Festival, marking the 100th Anniversary of the first Model T Ford being produced in Detroit. More than 300 people enjoyed Model T's displayed by the Mile High Chapter Model T Club of America. Staff from Denver Mountain Park's Buffalo Bill Museum conducted children's craft activities. A costume display entitled "Fit to a T" of women's dresses and accessories from the Model T era (1908-1927) were loaned by the University of Northern Colorado.



*The Model T Ford Club of America highlights how we traveled 100 years ago.*