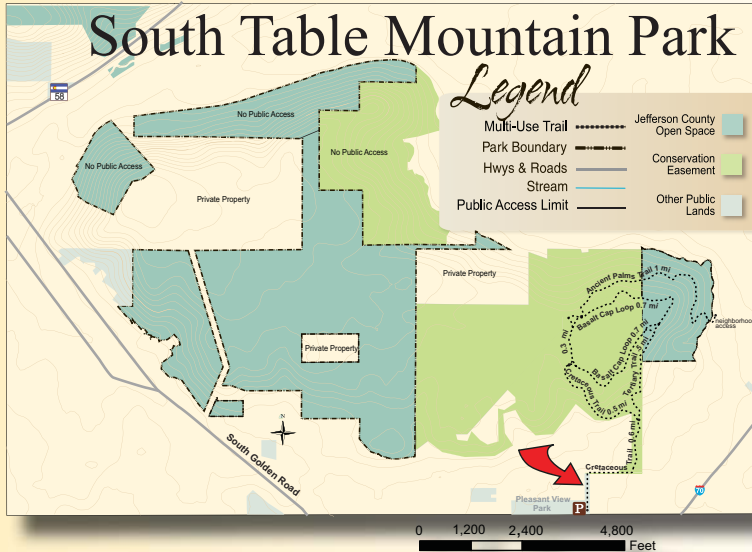


Open Space Division • Management Report

July - Sept.
2009

Acquisition: Acquire lands to preserve resources and provide for future recreational opportunities



An easement was granted for a drainage swale at Pleasant View Park.

- The County granted a non-exclusive, Permanent Easement to Xcel Energy (PSCo) that would allow them access to existing high power transmission lines located on South Table Mountain Park.
- The County granted to the US Department of Energy, in conjunction with the National Renewable Energy Laboratory (NREL), a permanent drainage Easement on the northern portion of Pleasant View Community Park for the construction and maintenance of a grass-lined drainage swale.

Another land acquisition project included a subordination of a reverter on 0.32 acres along the Sloans Lake Greenbelt in Lakewood for the replacement of a sanitary sewer line.

Land Management: Manage Open Space lands to preserve and enhance natural and cultural resources

- An application has been submitted for a GOCO Conservation Excellence Grant to update the Natural Heritage Inventory of Jefferson County. The last inventory was completed in 1993 by the Colorado Natural Heritage Program. The inventory will identify areas that contain rare and imperiled species and plant communities. This inventory is identified in the Open Space Master Plan as one of its Acquisition Values.



- The Natural Resources crews conducted forest management activities at the Elk Meadow Park Dog Off-Leash Area and Alderfer/Three Sisters Park, yielding enough timbers to conduct a public fuelwood sale held between September 11th and October 10th. The fuelwood sales help to remove fuels on Open Space lands as part of wildfire mitigation activities as well as restore the health and vigor of the forest.

Recreation: Provide for quality visitor experiences in a manner that protects natural and cultural resources

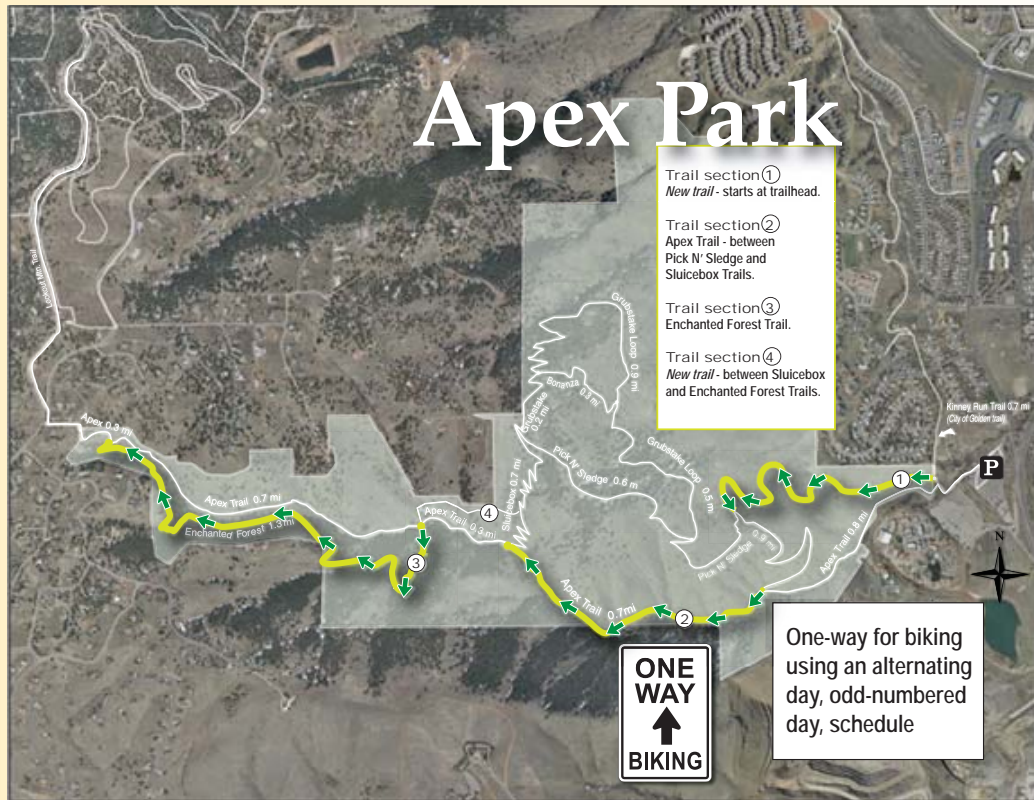
- Social trail remediation is underway at the Elk Meadow Dog Off-Leash Area where management of trespass has been challenging. Trail planning and construction are ongoing at this popular dog and owner destination.

July - Sept.
2009

JEFFERSON COUNTY

Recreation: Provide for quality visitor experiences in a manner that protects natural and cultural resources (continued)

- Following extensive public input, staff has developed a plan to improve the visitor experience at Apex Park. The plan to address increased conflict reports from visitors involves a minimum of new trail construction, designating a portion of Apex Trail, Enchanted Forest Trail and a new access trail from the Heritage Square trailhead as one-way for biking. The Open Space Advisory Committee individually endorsed the staff plan eight-to-one at the October public meeting.



- The Mayhem gulch 60-car parking facility and trailhead, located west of Golden on US Highway 6 is approximately 80% complete. The highway widening to accommodate the turn lanes is complete and the curb and gutter around the parking area is being poured in preparation for the asphalt paving of the parking area and the entrance road. The contracted work is scheduled to be completed October 1st with some in-house details to be finished later in the month.

Education: Foster awareness and appreciation for natural and cultural resources and the ethic of resource stewardship

Lookout Mountain Nature Center

- LMNC reached over 18,000 visitors through nature visits and public programs. This is 23% higher than during the same period last year.
- Two special programs/events were held, including the River Festival at Pine Valley Ranch Park in August and The Junior Astronomers — Night Sky Celebration in September.
- Evening campground programs held at the new Lair o' the Bear Park education shelter have been successful with attendance either full or with large waiting lists.



River Festival 2009 at Pine Valley Park.

July - Sept.
2009

JEFFERSON COUNTY

Hiwan

- The 150th anniversary of the first settlers, the Bergen family, moving into the Evergreen/Conifer area was celebrated on July 4th. Many other organizations, such as Evergreen Park and Recreation District, Evergreen Rodeo Association, Center for the Arts Evergreen and the Evergreen Downtown Business Association helped with fundraising and coordination for the event. About 400 people attended this successful event.
- Children's Victorian Tea on August 10th was sold out and many of the children dressed up in Victorian costumes.
- The Evergreen Fine Arts Festival was held on August 29th and 30th in Heritage Grove, next to the Museum. Because of the festival, 350 people also visited the Museum.
- The Fifth Annual Outdoor Quilt Festival on September 26th exhibited more than 100 quilts and coverlets.
- The Museum staff and volunteers served approximately 4,300 people from July through September.

Partnerships: Strengthen and build partnerships for community parks, recreation, open space and trails

- Development of North Table Mountain Park has started. Phase I of the trail construction is designed to connect with the existing old roadbeds and complete a loop trail system. Utilizing the Youth Work Program and Volunteer Trail Days this summer approximately one and a half miles of the trail was completed. Trail bridges made of fiberglass and constructed by in-house crews will be installed as trail construction progresses. The County Road and Bridge Department has been contracted to work on the turn lanes from Highway 93. Construction has started and will be followed by improving the entrance road and constructing the parking area.
- Work on the trail from Reynolds Park to the South Platte River has begun. The trail will be approximately eight miles long and take about three years to finish. It will be available for hiking, equestrian use and mountain biking. The trail will be located on property owned by the County and the Denver Water Board and will be funded in part by a Colorado State Trails Grant.
- Acquisition Staff participated in the creation of a Local Government Best Practices Handbook with representatives from Larimer County, City of Fort Collins and Great Outdoors Colorado. The Handbook was presented to the annual Colorado Open Space Alliance Conference in an educational session.

Sustainability: Ensure the viability of Jefferson County Open Space for future generations

- Various repairs were made to Open Space facilities including the access road into Pine Valley Ranch Park, Crown Hill restrooms, Matthews/Winters restrooms, Eagle Eye Shelter at Mount Falcon, Van Bibber parking lot, as well as the White Ranch, Elk Meadow and Reynolds Park residences.
- Continued exterior renovation at the Pine Valley Ranch Lodge, including major log replacement.
- The silt pond at the Flying J Ranch Park impoundment was cleaned and the spillway catwalk was replaced.
- Caissons were installed for the new kiosks at South Table Mountain and Hildebrand Ranch Park.
- The Lookout Mountain Nature Center entry gate was painted and a surge protector installed (to protect against lightning strikes).



Open Space staff work on the Reynolds Park residence buildings.