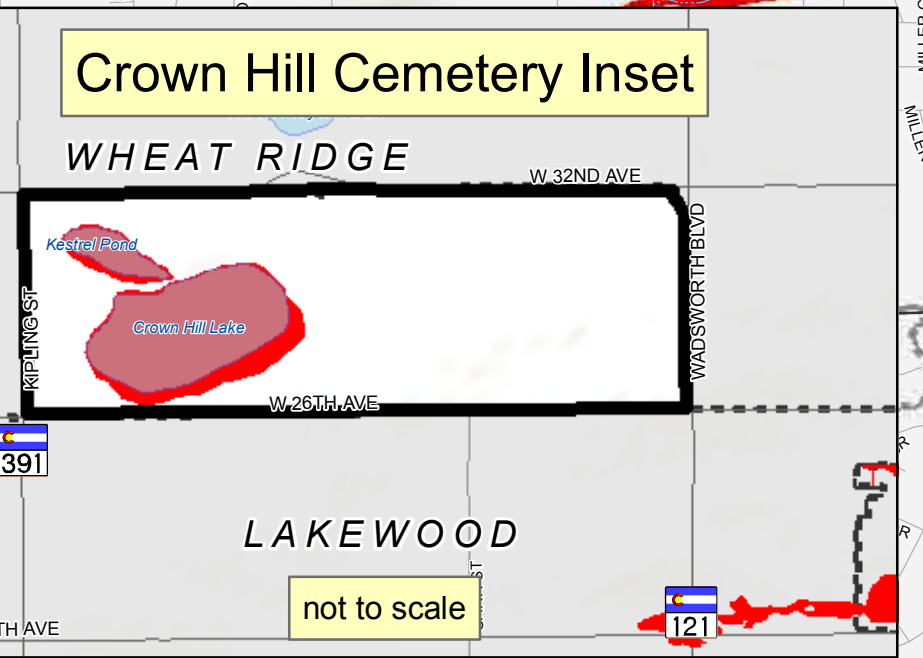
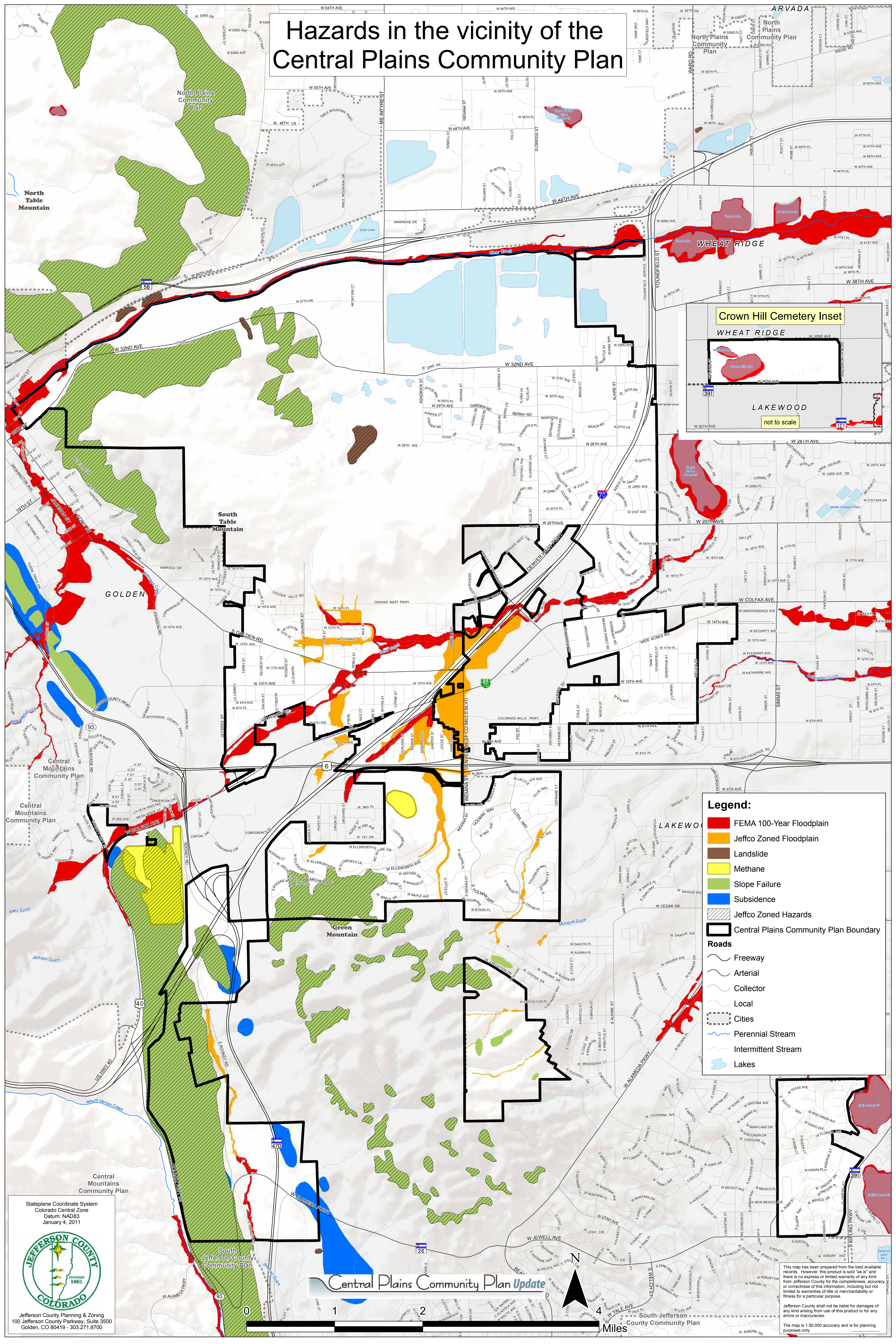


Hazards in the vicinity of the Central Plains Community Plan



- Legend:**
- FEMA 100-Year Floodplain
 - Jeffco Zoned Floodplain
 - Landslide
 - Methane
 - Slope Failure
 - Subsidence
 - Jeffco Zoned Hazards
 - Central Plains Community Plan Boundary
- Roads**
- Freeway
 - Arterial
 - Collector
 - Local
- Other Features**
- Cities
 - Perennial Stream
 - Intermittent Stream
 - Lakes

Stateplane Coordinate System
Colorado Central Zone
Datum: NAD83
January 4, 2011

Jefferson County Planning & Zoning
100 Jefferson County Parkway, Suite 3500
Golden, CO 80419 - 303.271.8700

Central Plains Community Plan Update

Miles

This map has been prepared from the best available records. However, this product is sold "as is" and there is no express or implied warranty of any kind from Jefferson County for the completeness, accuracy or correctness of this information, including but not limited to warranties of title or merchantability or fitness for a particular purpose.

Jefferson County shall not be liable for damages of any kind arising from use of this product or for any errors or inaccuracies.

The map is 1:50,000 accuracy and is for planning purposes only.