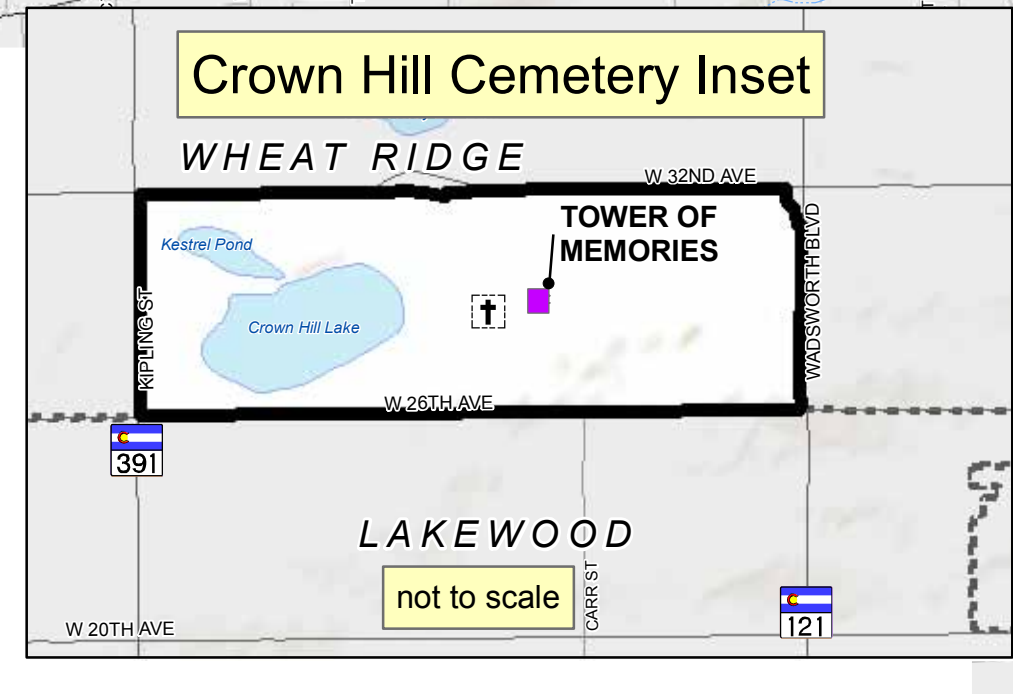
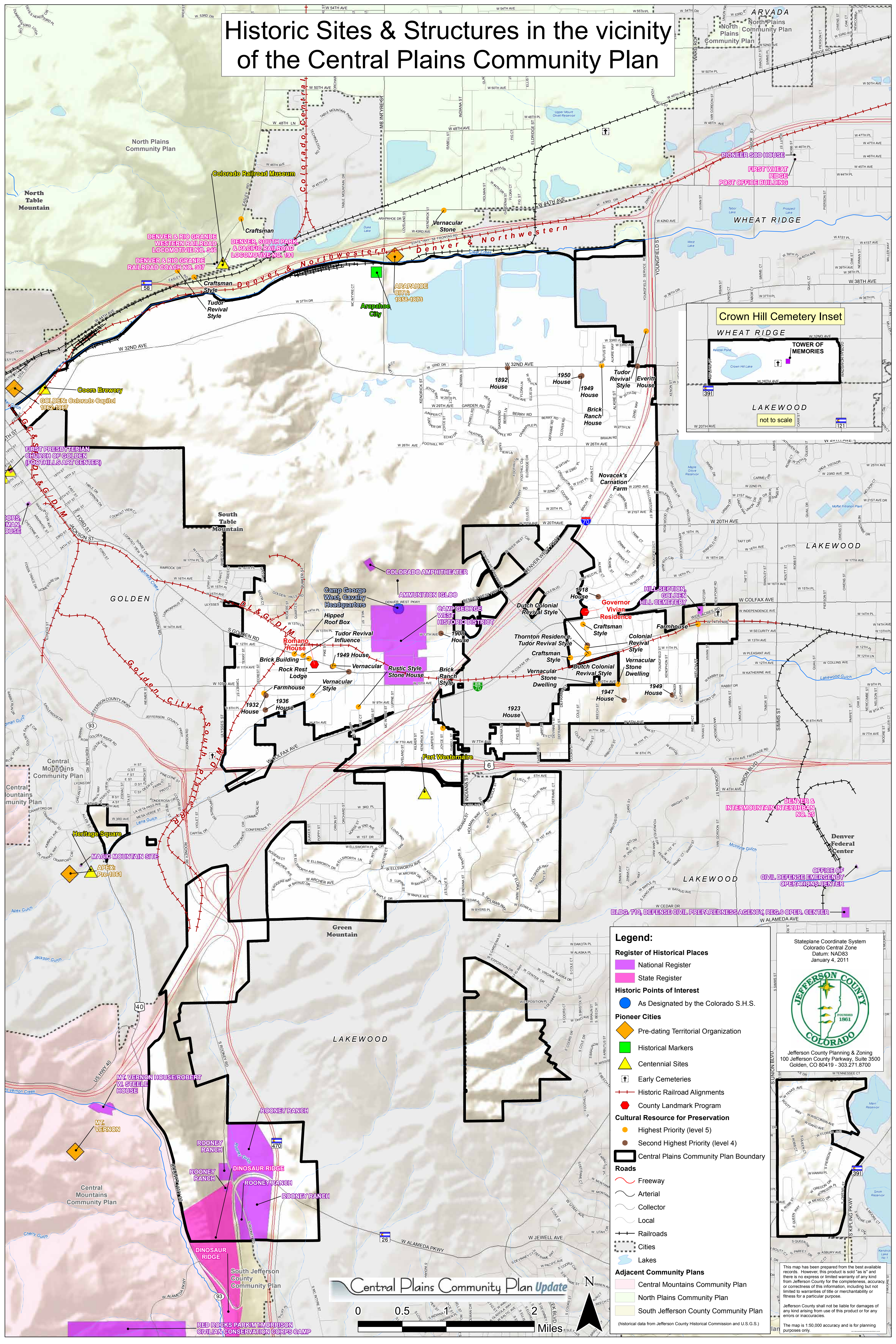


Historic Sites & Structures in the vicinity of the Central Plains Community Plan



Legend:

- Register of Historical Places**
 - National Register (Purple square)
 - State Register (Pink square)
- Historic Points of Interest**
 - As Designated by the Colorado S.H.S. (Blue circle)
- Pioneer Cities**
 - Pre-dating Territorial Organization (Orange diamond)
 - Historical Markers (Green square)
 - Centennial Sites (Yellow triangle)
- Other Landmarks**
 - Early Cemeteries (Black cross)
 - County Landmark Program (Red circle)
- Cultural Resource for Preservation**
 - Highest Priority (level 5) (Orange circle)
 - Second Highest Priority (level 4) (Brown circle)
- Roads**
 - Central Plains Community Plan Boundary (Thick black line)
 - Freeway (Red line with dashes)
 - Arterial (Red line)
 - Collector (Grey line)
 - Local (Black line)
 - Railroads (Black line with cross-ticks)
- Cities**
 - Cities (Blue outline)
 - Lakes (Blue area)
- Adjacent Community Plans**
 - Central Mountains Community Plan (Pink outline)
 - North Plains Community Plan (Green outline)
 - South Jefferson County Community Plan (Yellow outline)

(historical data from Jefferson County Historical Commission and U.S.G.S.)

Stateplane Coordinate System
Colorado Central Zone
Datum: NAD83
January 4, 2011

Jefferson County Planning & Zoning
100 Jefferson County Parkway, Suite 3500
Golden, CO 80419 - 303.271.8700

This map has been prepared from the best available records. However, this product is sold "as is" and there is no express or implied warranty of any kind from Jefferson County for the completeness, accuracy or correctness of this information, including but not limited to warranties of title or merchantability or fitness for a particular purpose.

Jefferson County shall not be liable for damages of any kind arising from use of this product or for any errors or inaccuracies.

The map is 1:50,000 accuracy and is for planning purposes only.

