

Jefferson County Community Plans

Plains Plan Update 2010

This map shows areas that were previously covered by the General Land Use Plan as incorporated into the Central Plains and South Jefferson County Community Plans

Legend:

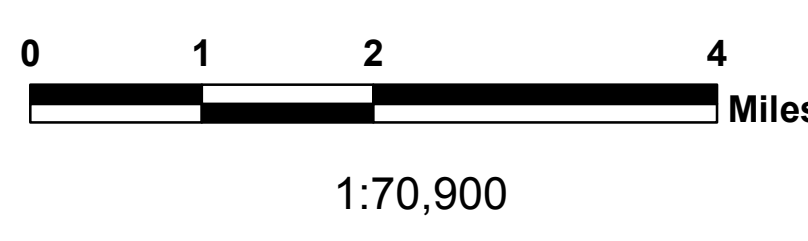
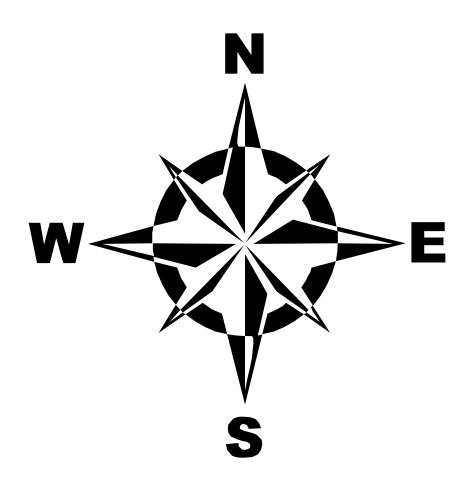
- C470 Corridor Plan
- Central Mountains Community Plan
- Central Plains Community Plan
- Clear Creek / I-76 Plans
- Conifer / 285 Corridor Area Community Plan
- Evergreen Area Community Plan
- Indian Hills Community Plan
- North Mountains Community Plan
- North Plains Community Plan
- Northeast Comprehensive Development Plan
- South Jefferson County Community Plan

Roads

- Freeway
- Arterial
- Collector

Cities

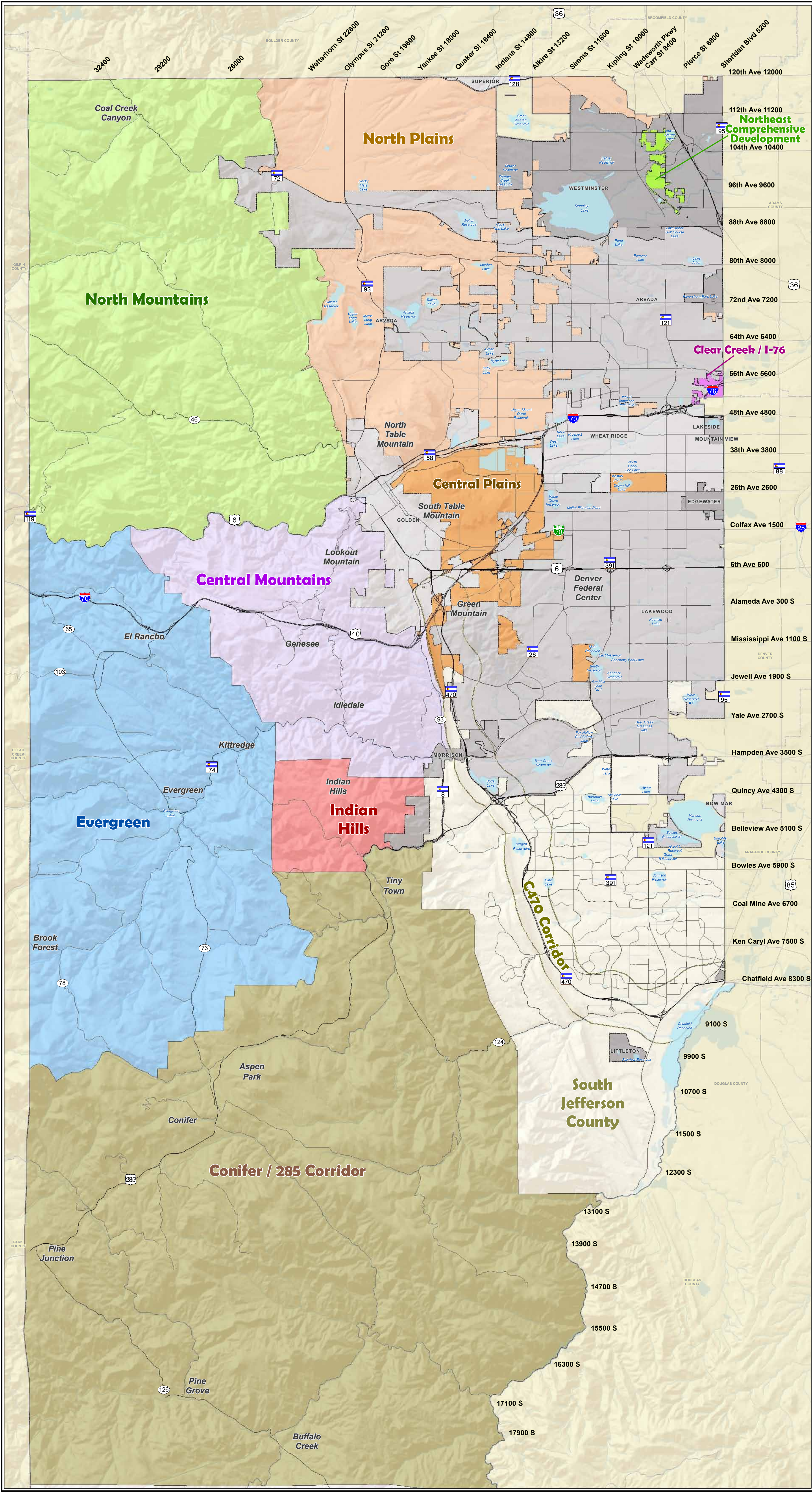
- Jefferson County
- Adjacent Counties



Jefferson County Planning & Zoning
 100 Jefferson County Parkway
 Suite 3550
 Golden, CO 80419
 303.271.8700



Stateplane Coordinate System
 Colorado Central Zone
 Datum: NAD83
 Created: June 11, 2010 - kwh



This map has been prepared from the best available records. However, this product is sold "as is" and there is no express or implied warranty of any kind from Jefferson County for the completeness, accuracy, or correctness of this information, including but not limited to warranties of title or merchantability or fitness for a particular purpose. Jefferson County shall not be liable for damages of any kind arising from use of this product or for any errors or inaccuracies. The map is 1:50,000 accuracy and is for planning purposes only.