

**Legend:**

- Schools**
- Pre-School
  - Elementary School
  - Middle School
  - High School
  - Option School
  - Special School/Program
  - Charter School
  - Library
  - Fire Stations
  - Road & Bridge Shop
  - Sheriff's Office

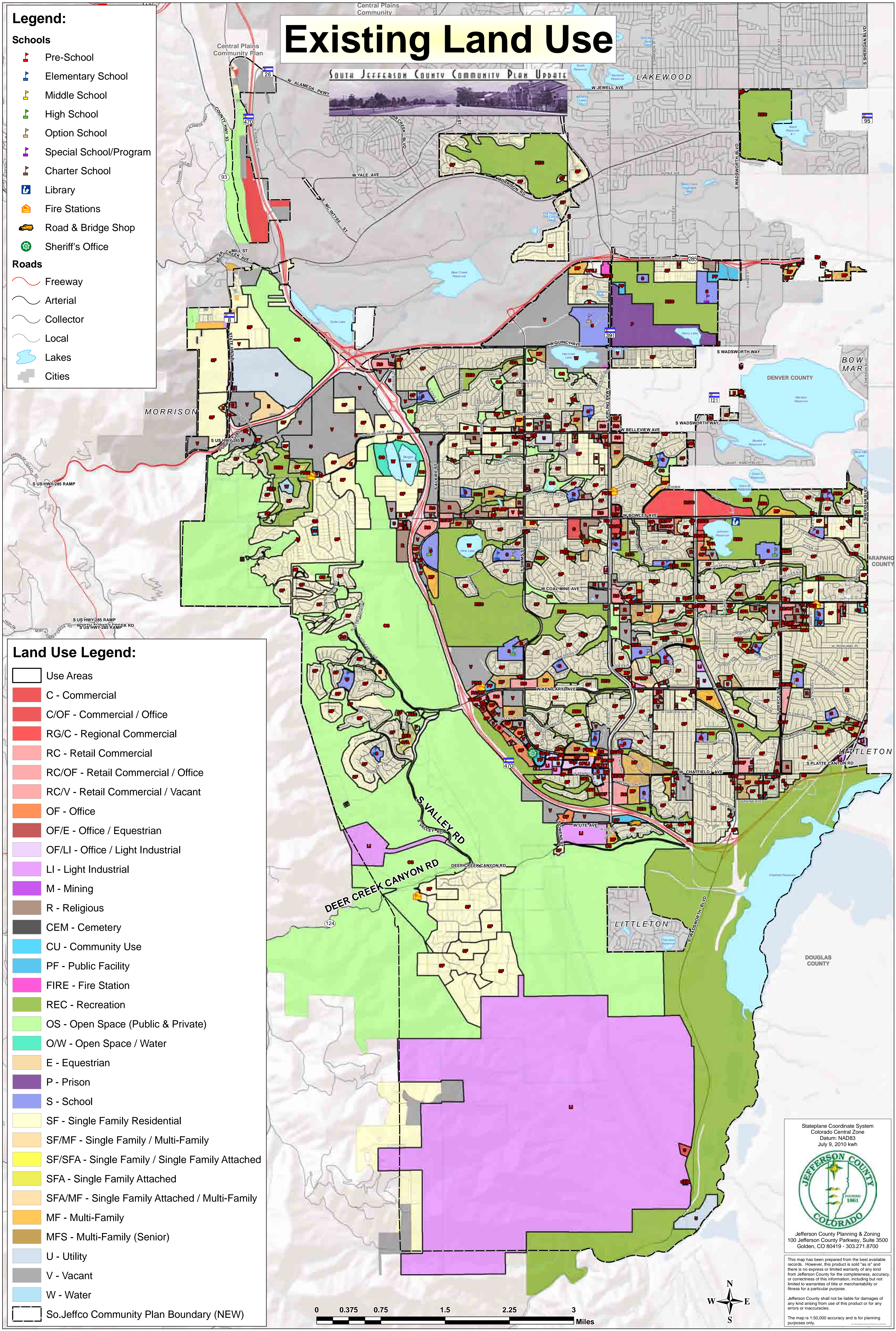
- Roads**
- Freeway
  - Arterial
  - Collector
  - Local
  - Lakes
  - Cities

**Land Use Legend:**

- Use Areas
- C - Commercial
- C/OF - Commercial / Office
- RG/C - Regional Commercial
- RC - Retail Commercial
- RC/OF - Retail Commercial / Office
- RC/V - Retail Commercial / Vacant
- OF - Office
- OF/E - Office / Equestrian
- OF/LI - Office / Light Industrial
- LI - Light Industrial
- M - Mining
- R - Religious
- CEM - Cemetery
- CU - Community Use
- PF - Public Facility
- FIRE - Fire Station
- REC - Recreation
- OS - Open Space (Public & Private)
- O/W - Open Space / Water
- E - Equestrian
- P - Prison
- S - School
- SF - Single Family Residential
- SF/MF - Single Family / Multi-Family
- SF/SFA - Single Family / Single Family Attached
- SFA - Single Family Attached
- SFA/MF - Single Family Attached / Multi-Family
- MF - Multi-Family
- MFS - Multi-Family (Senior)
- U - Utility
- V - Vacant
- W - Water
- So.Jeffco Community Plan Boundary (NEW)

# Existing Land Use

SOUTH JEFFERSON COUNTY COMMUNITY PLAN UPDATE



Stateplane Coordinate System  
 Colorado Central Zone  
 Datum: NAD83  
 July 9, 2010 kwh



Jefferson County Planning & Zoning  
 100 Jefferson County Parkway, Suite 3500  
 Golden, CO 80419 - 303.271.8700

This map has been prepared from the best available records. However, this product is sold "as is" and there is no express or limited warranty of any kind from Jefferson County for the completeness, accuracy, or correctness of this information, including but not limited to warranties of title or merchantability or fitness for a particular purpose.

Jefferson County shall not be liable for damages of any kind arising from use of this product or for any errors or inaccuracies.

The map is 1:50,000 accuracy and is for planning purposes only.