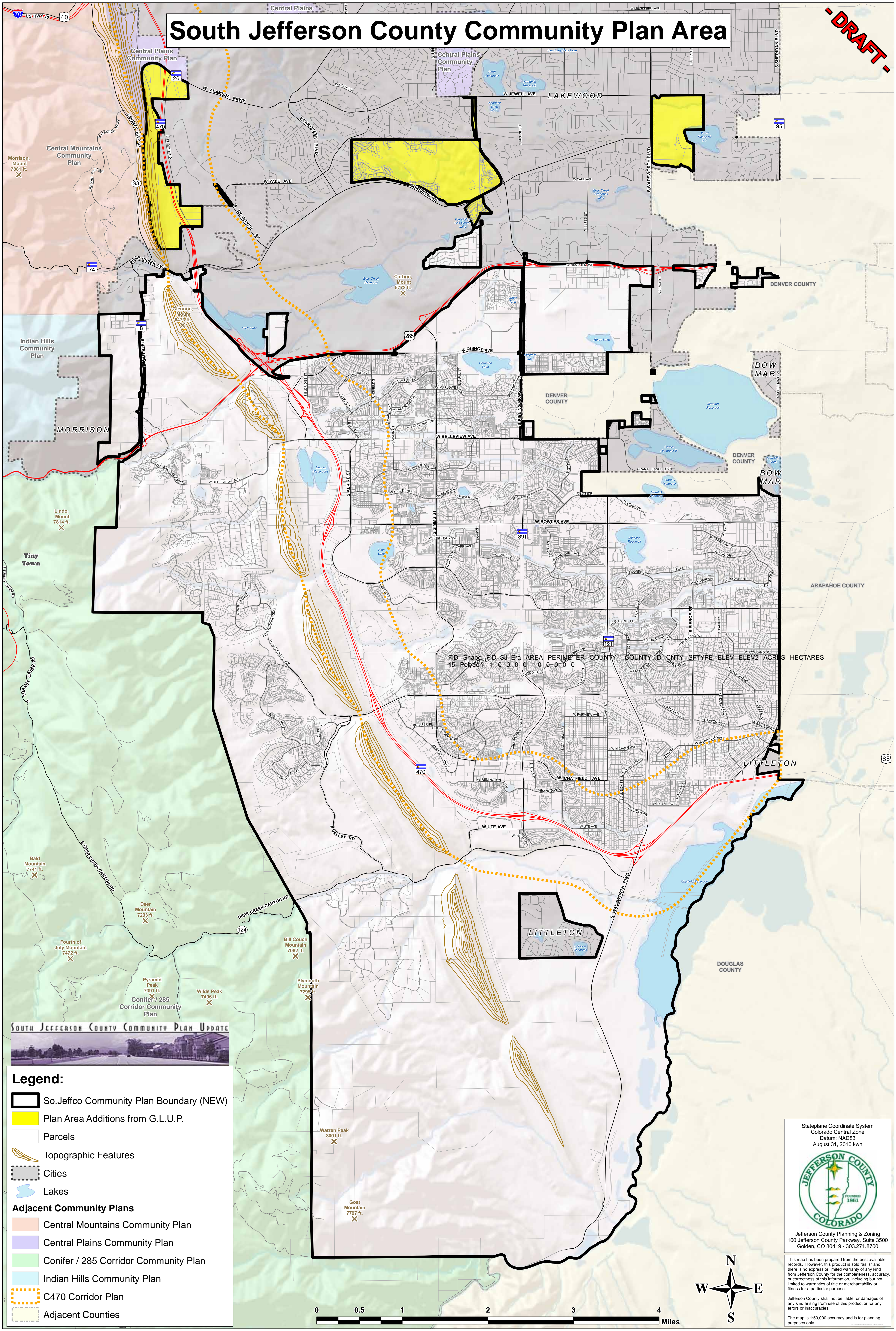


# South Jefferson County Community Plan Area

**- DRAFT -**



FID Shape\_BID\_SJ Area PERIMETER COUNTY COUNTY\_ID CNTY\_SFTYPE ELEV ELEV2 ACRES HECTARES  
 15 Polygon -1 0 0 0 0 0 0 0 0

## SOUTH JEFFERSON COUNTY COMMUNITY PLAN UPDATE



**Legend:**

- So.Jeffco Community Plan Boundary (NEW)
- Plan Area Additions from G.L.U.P.
- Parcels
- Topographic Features
- Cities
- Lakes

**Adjacent Community Plans**

- Central Mountains Community Plan
- Central Plains Community Plan
- Conifer / 285 Corridor Community Plan
- Indian Hills Community Plan
- C470 Corridor Plan
- Adjacent Counties

Stateplane Coordinate System  
 Colorado Central Zone  
 Datum: NAD83  
 August 31, 2010 kwh

Jefferson County Planning & Zoning  
 100 Jefferson County Parkway, Suite 3500  
 Golden, CO 80419 - 303.271.8700

This map has been prepared from the best available records. However, this product is sold "as is" and there is no express or limited warranty of any kind from Jefferson County for the completeness, accuracy, or correctness of this information, including but not limited to warranties of title or merchantability or fitness for a particular purpose.

Jefferson County shall not be liable for damages of any kind arising from use of this product or for any errors or inaccuracies.

The map is 1:50,000 accuracy and is for planning purposes only.