



# What's the connection between **green** lawns and **algae** in our waterways?

**Excess fertilizer and nutrients wash off our lawns and into our waterways.**

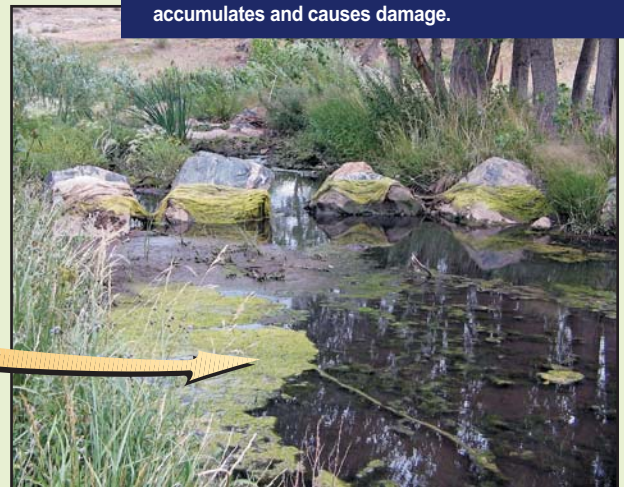
**Rainfall and over-irrigation** wash the fertilizer that contains phosphorous and nitrogen from a lawn to the nearest waterway. The storm drain system, which is designed to prevent flooding, also carries nutrients and pollution from our properties to the nearest pond or creek.

**When summer temperatures** reach 80°F or greater, algae may grow in a pond or other slow flowing waterway.

In addition to generating a foul odor, decaying algae uses up the oxygen that fish and other aquatic wildlife need to survive. This is a concern for wildlife and people because properties near waterways are typically 5-30% higher in value than properties not near water. Protecting our waterways protects wildlife and our property values.



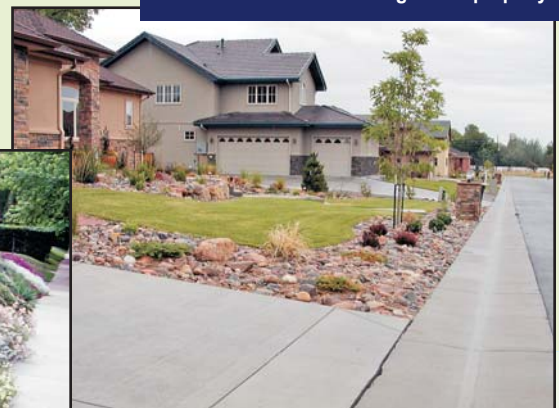
► Over-irrigation washes phosphorous and nitrogen into the storm drain system.



► The storm drain system empties into our waterways and small amounts of nutrients from hundreds of lawns accumulates and causes damage.

## So, what can you do?

- Use less fertilizer.
- Install a Xeriscape buffer strip between the lawn and sidewalk to absorb lawn runoff.
- Replace lawn areas with Xeriscape vegetation, which uses less fertilizer and water.



► A Xeriscape buffer strip keeps excess water and fertilizer from washing off the property.



photo courtesy of Denver Water

► Xeriscape landscaping uses less fertilizer and water.

For additional information please contact:  
Jefferson County  
Planning and Zoning  
303.271.8700  
<http://planning.jeffco.us>