



Jefferson County

2009 Citizen Budget Review Panel

Topic : Capital Infrastructure Needs

**Jefferson County Court and
Administration Building**

March 17, 2009

Meeting Agenda

- **Introduction**
- **Section 1:** Facility-related projects
- **Section 2:** Internal Capital Infrastructure Needs
- **Section 3:** Non-General Fund Capital Projects
- **Section 4:** Panel Discussion / Questions
- **Next Steps**



Facility / Infrastructure Needs

Countywide Facility Infrastructure Summary

- **Portfolio Replacement Value** - \$318,832,140.44
- **Total number of FACM supported buildings**
 - Leased - 8
 - Owned – 49 major
- **Total square footage of buildings**
 - Leased – 55,000 SF
 - Owned -1,400,000 SF*
- **Total number of individual tenants**
 - Approximately 100+
- **Vacant Space**
 - Approximately 17,000 SF in 5 buildings

* Excludes the Detention Facility

Jefferson County, Colorado

Annual Countywide Utility / Lease Expenses

Facility Operational Costs*

Heat & Power Budget - \$1,869,915*

Annual Lease Payments - \$475,262

*** Excludes the Detention Facility Operations**

Jefferson County, Colorado

Major Capital Needs

2007 RNL Space Needs Study

1,309,918 GSF (47% increase over current space) needed on Campus by 2026.

(This does not include Sheriff Office Detentions)

Courts Master Planning

3 judges by 2010 (Delayed until 2011)

9 additional judges proposed by 2030 based on the State Court Administrator's Office projections

Countywide Facility Related Needs

- Additional Courtrooms / Remodel Project and Security Enhancements \$9 million +
- Parking Lot Expansion \$10 - \$12 million
- Health Department – Arvada Facility \$4 - \$6 million
- Clerk & Recorder - Motor Vehicle Relocation \$4 - \$6 million
- Community Correction Facility \$20 million +
- Detention Facility Expansion – Phase 1 \$60 million

Countywide Facility Related Needs

- New York Building Renovation* \$15 million
- Replacement of Major Detention Facility Components \$8 - \$10 million
- Replacement of Major Administration and Court Facility Components (Chillers / Air Handlers/Roofing) \$10.1 million
- Drainage Project Improvements \$3.7 million

* Necessary if the Community Correction Facility isn't constructed.

Jefferson County, Colorado

Facility Infrastructure Summary

Total Facility Infrastructure
Related Costs =

\$136.8 million



Internal Capital-Related Projects

Internal Operations – Capital Needs/Requirements

- Replacement of County Voting Equipment \$14 million
- Replacement of the “Anthem” Recording System \$500K
- Treasurer System Integration with Assessor Project \$1.5 million
- District Attorney – Case Management System Upgrade \$1.5 million

Information Technology Summary

Category	2010	2011	2012
Transparency/Web	\$ 407,600	\$ 120,000	\$ 5,000
Data Storage/ Backups/ Servers	1,628,000	25,000	
Data Center Move / Bus. Continuity	750,000		
Applications, Security	400,000		
Total	\$ 3,185,600	\$ 145,000	\$ 5,000

Internal Capital Project Summary

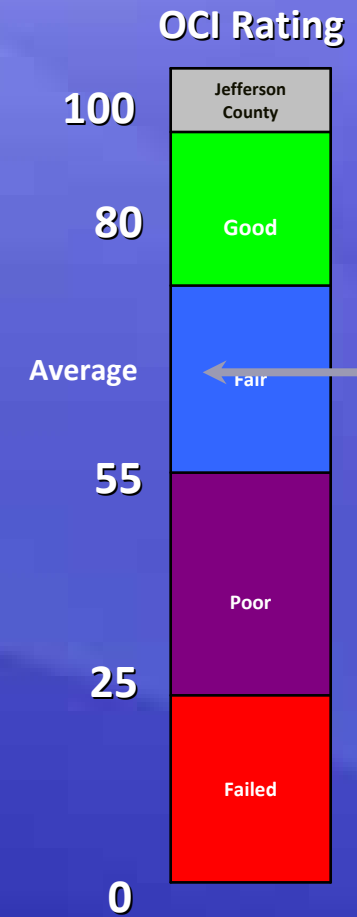
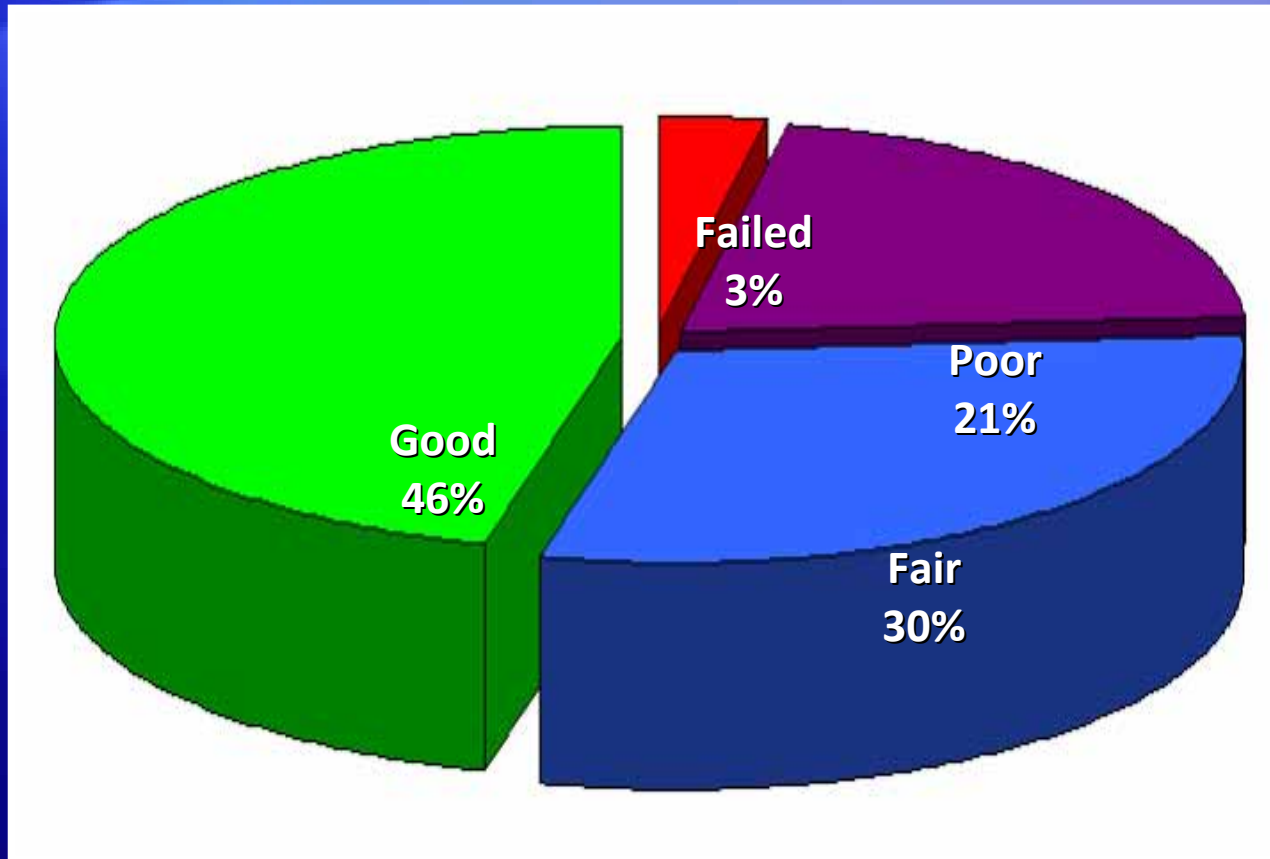
Total Internal Capital
Project Costs =

\$20.6 million



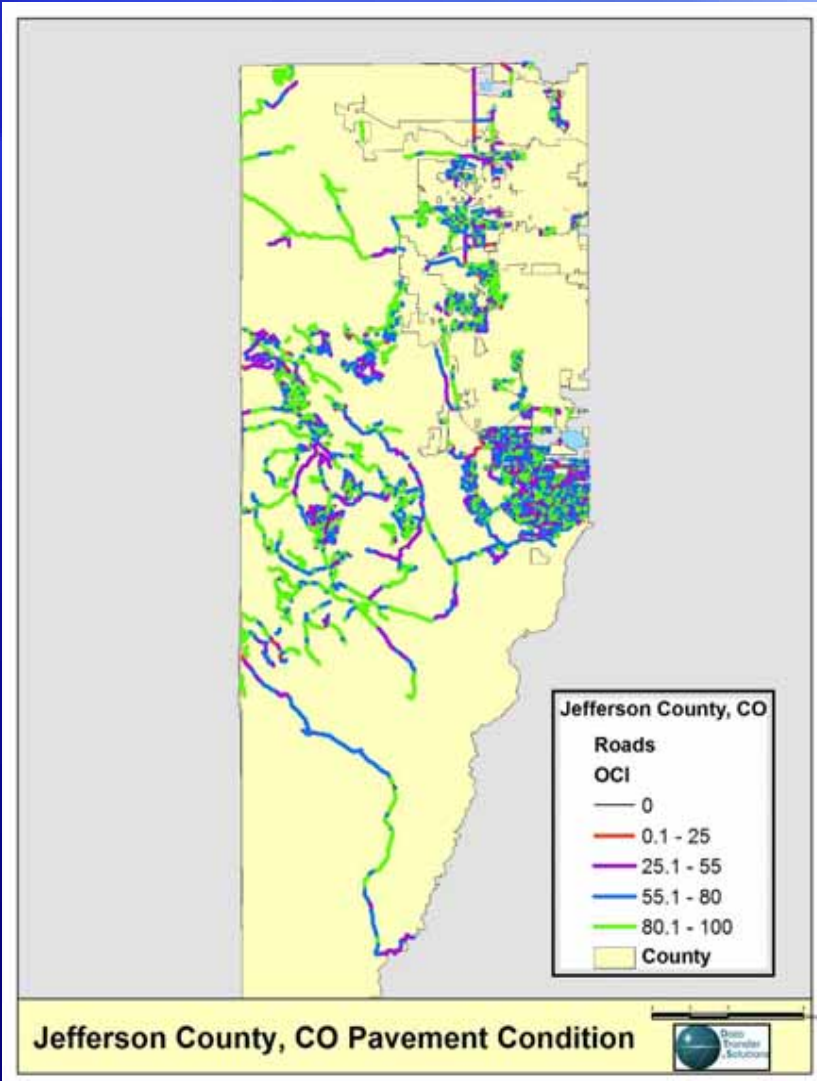
Non-General Fund Projects

Pavement Conditions



Network OCI Average = 70.87

What We Maintain



- 997 Centerline Miles of Paved Roads
- 2,860 Lane Miles
- 10,667 Segments
- 167 Million Square Feet
- Total Estimated Replacement Value – \$1.5 Billion

Road and Bridge Five-Year Plan Summary

Road and Bridge Funding Structure

Road and Bridge Fund
Southeast Sales Tax Fund
Traffic Impact Fees
Conservation Trust Fund

Includes Road, Traffic Safety, and Bridge Projects

Total Five-Year Plan Amount = **\$43.7 million**

Airport Funding for Capital Improvement Projects

Financial Overview

- Airport Division serves as an Enterprise Fund.
- No funding support from the General Fund.

Funding for CIP Improvements

Federal FAA Funding = 95%

Colorado Discretionary Aviation Grant = 2.5%

Airport Sponsor (Jefferson County) = 2.5%

Rocky Mountain Metropolitan Airport Six-Year Capital Plan

Airport Related Capital

Projects Total =

\$32.6 million

Fleet Replacement Program

Financial Overview

- Fleet Services is an Internal Service Fund
 - Operates like a “business” and receives funding from various county operations
-

Replacement Program Overview – 1,070 Vehicles

General Fund \$1 - \$2 million / annually

Road and Bridge Fund \$2 - \$4 million/annually

Fleet Services - Vehicle & Equipment Reductions

Year	Amount
2003	\$ 627,500.00
2004	\$ 591,000.00
2005	\$ 593,646.00
2006	\$ 1,010,400.00
2007	\$ 872,000.00
Total	\$ 3,694,546.00

Law Enforcement Authority Facility Projects

Mountain Area Substation

\$5 - \$6 million

South JeffCo Substation

\$12 – \$14 million

Estimated Total Project Cost \$17 - \$20 million

Panel Discussion / Questions