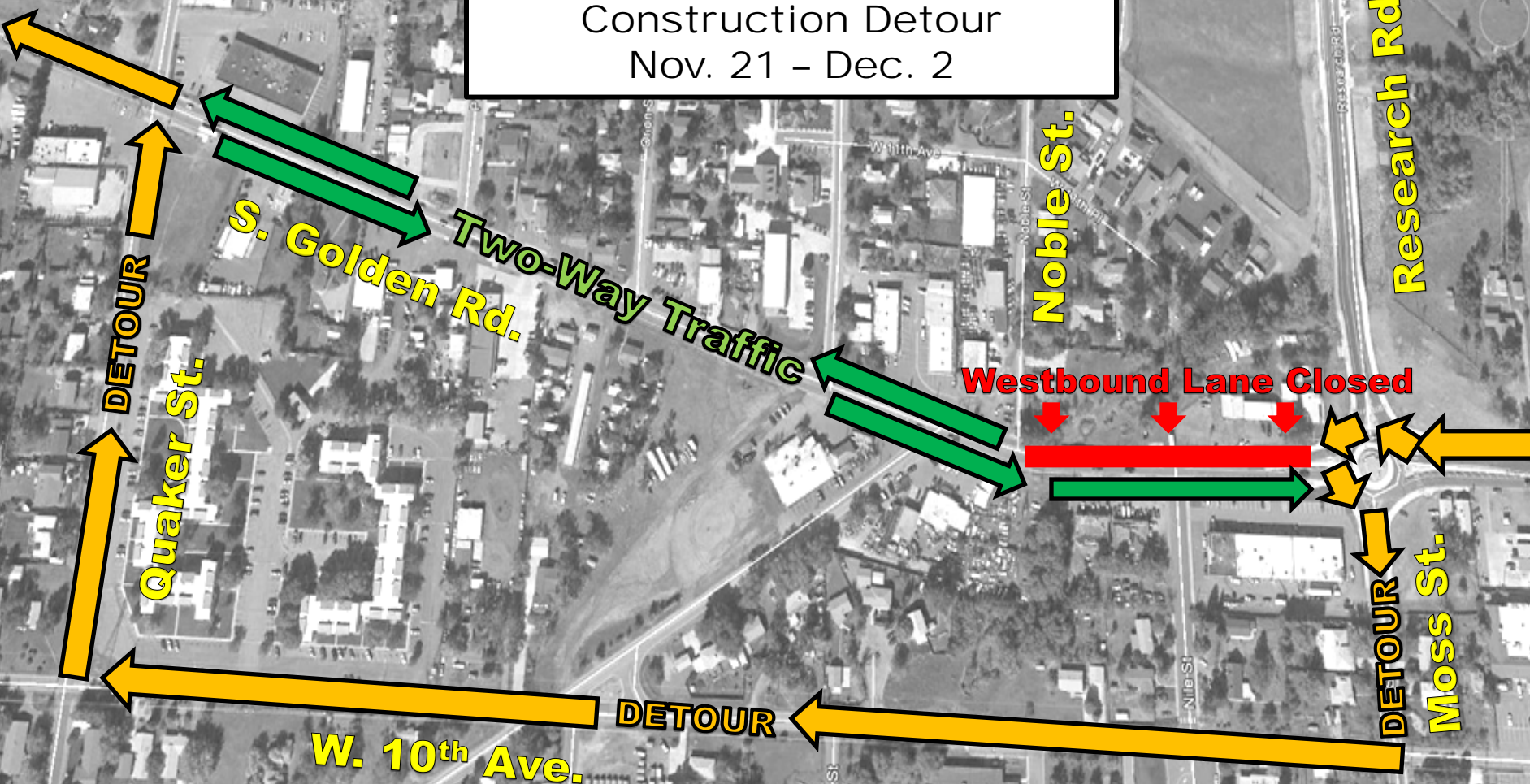


South Golden Road
(Moss Street to Noble Street)
Construction Detour
Nov. 21 - Dec. 2



South Golden Road at Lena Gulch will be closed to westbound traffic from Moss Street to Noble Street. Westbound traffic from the roundabout at Moss Street will be detoured south to West 10th Avenue and west to Quaker Street. Side streets will remain open.